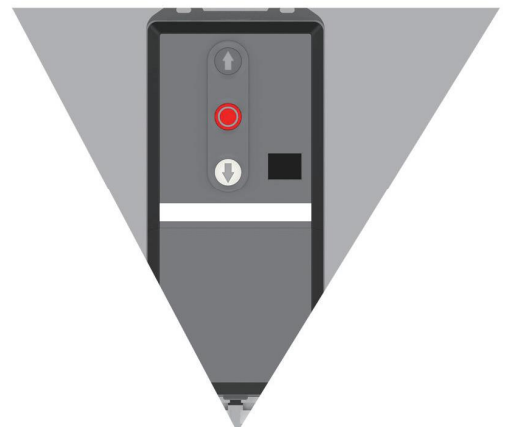
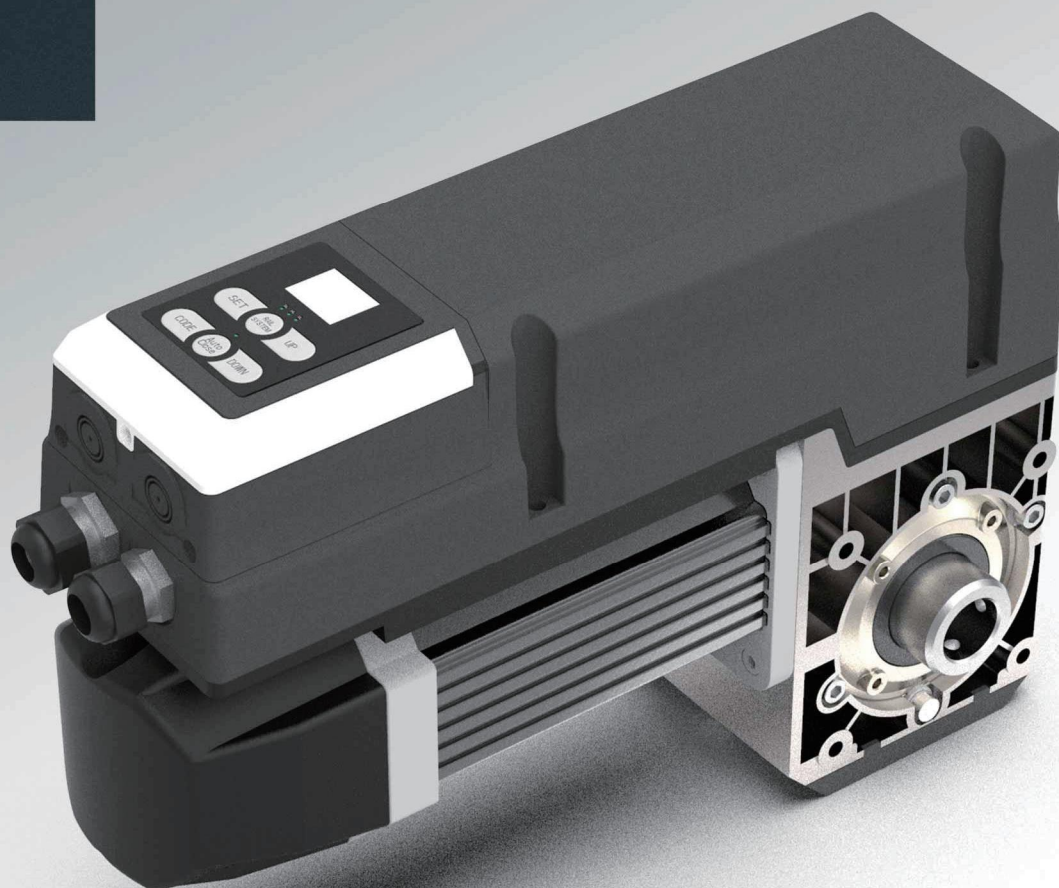


INDUSTRIAL DOOR MOTOR

N:16016



LION



DC series

Automation for Industrial Doors

LION 35



APPLICATION:

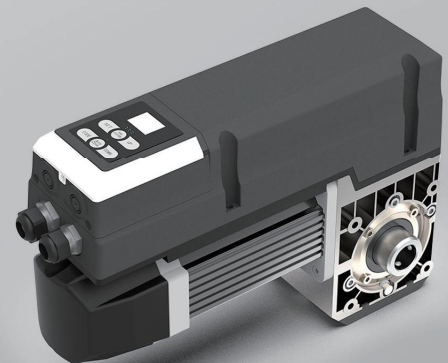
- > Residential Double Garage Door
- > Commercial Logistics & Parking Lot Doors
- > Factory Entrance Industrial Doors

DOOR SIZE SUPPORTED:

- Upto 195 Kgs Door Weight Supported
- Upto 15 m Door Size Supported
- Upto 5.0m Door High Supported

DOOR TYPE SUPPORTED:

- Sectional Panel Garage Door
- Sandwich/ Alu Panorama or Commercial Doors



.CIRCULATION CLUTCH

- PLUGGABLE CLUTCH
- CONVENIENT FOR MANUALLY OPENING
- PATENTED DESIGN



.DC DRIVE

- SAFETY ENSURANCE
- SOFT START&SOFT STOP
- SILENTLY RUNNING
- AUTOMATICALLY OBSTACLE REVETRSE

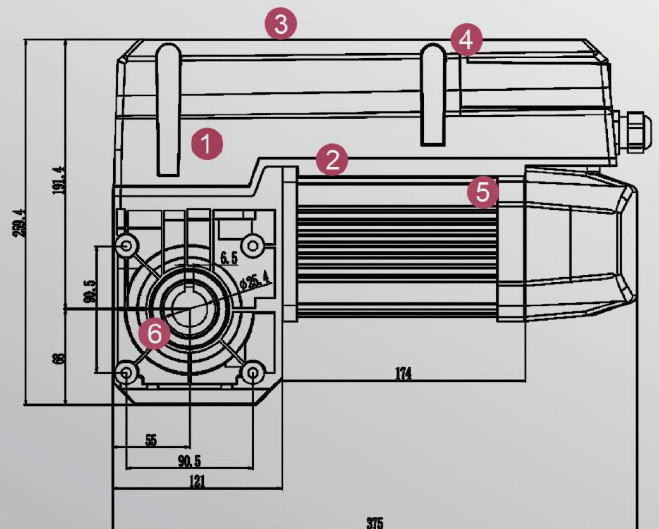


.AUTO ADJUSTED FORCE SYSTEM (AAFS)

- SMART CALCULATION SYSTEM
- EASIEST INSTALLATION
- AUTO SELECTED FORCE SYSTEM
- THE BEST POINT OF POWER, SMOOTHNESS AND SILENCE
- AUTO-LEARNING SYSTEM FOR EVERY RUNNING


PARAMETER . LION 35

Maximum Output torque	35Nm	1 Gearbox
Rated output torque	25Nm	2 Motor
Input voltage	110/220(1+10%)V 50Hz	3 Casing
Control system	24V DC	4 Flip
Motor power	0.35 Kw	5 Rear trim cover
Static holding torque	400Nm	6 Front clutch
Max. output speed	24rpm-32rpm	
Operation limit turns (limit travel)	15 turns of output shaft (max. 5.0m lifting height recommend)	
Sleeve shaft diameter (standard)	φ25.4mm	
Keyway size	6.3mm	
Thermal protection temperature	105°C	
Continuous sound pressure level	<70dB	
Max. cycles per hour	20	
IP protection class	IP54	
Temperature range	- 20°C /+ 60°C	
Standard kit	Drive motor&push button or TX/RX control	
Quick release with rope	Including	
Chain hoist module	Optional	
Optional sensing edge set (TX and RX)	Optional	




No active closing edge protection necessary for doors up to 14m²
Soft-Start and Soft-Stop protect the door and reduce repair costs


Standard sectional doors with cylindrical cable drum

	Door size(max.)	18m ²	Door weight(max.)	234kg
---	-----------------	------------------	-------------------	-------

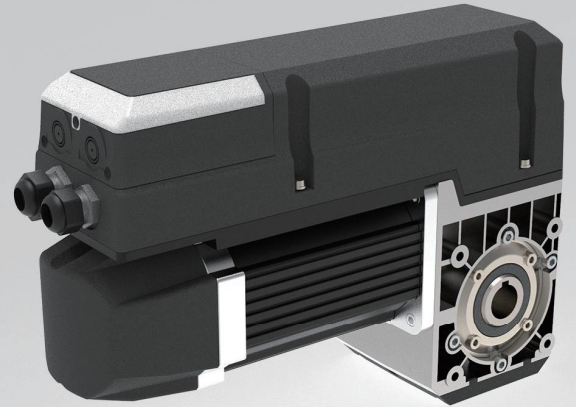
Vertical lift sectional doors with conical cable drum

	Door size(max.)	14m ²	Door weight(max.)	182kg
---	-----------------	------------------	-------------------	-------

High lift sectional doors with cylindrical-conical cable drum

	Door size(max.)	18m ²	Door weight(max.)	234kg
---	-----------------	------------------	-------------------	-------

LION 50



.AUTO ADJUSTED FORCE SYSTEM (AAFS)



.DC DRIVE



.CIRCULATION CLUTCH

APPLICATION

- FACTORY/ WAREHOUSE INDUSTRIAL DOORS
- LOGISTICS CENTER DOORS
- COMMERCIAL CENTER/ PARKING LOT DOORS

DOOR TYPE SUPPORTED

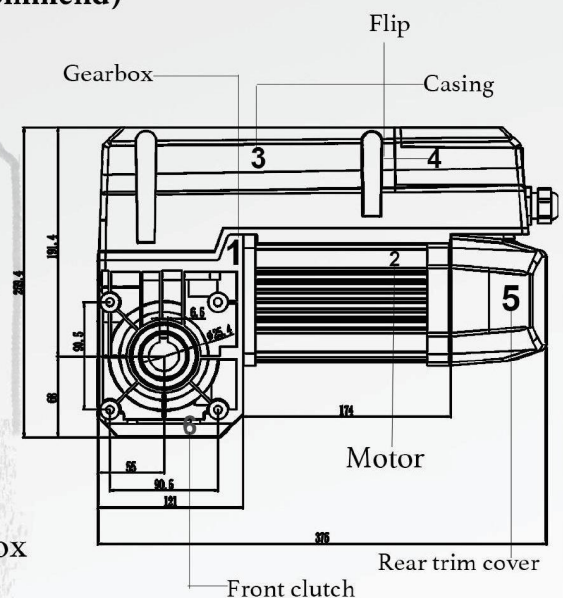
- SANDWICH INSULATED GARAGE/INDUSTRIAL DOORS
- ALU PANORAMA OR COMMERCIAL INDUSTRIAL DOORS

DOOR SIZE SUPPORTED

- UPTO 18 M² DOOR SIZE SUPPORTED
- UPTO 234 KGS DOOR WEIGHT SUPPORTED
- UPTO 7.0M DOOR HIGH SUPPORTED

PARAMETER LION 50

● MAXIMUM OUTPUT TORQUE	50Nm
● Rated out torque	35Nm
● Input voltage	110/220(1+10%)V 60Hz/50Hz 380v-420V
● Control system	24V DC
● Motor power	0.45Kw
● Static holding torque	400Nm
● Max. output speed	24rpm-32rpm
● Operation limit turns (limit travel)	15 turns of output shaft (max. 6.5m lifting height recommend)
● Sleeve shaft diameter (standard)	φ25.4mm
● Keyway size	6.3mm
● Thermal protection temperature	105°C
● Continuous sound pressure level	< 70dB
● Max. cycles per hour	20
● IP protection class	IP54
● Temperature range	- 20°C /+ 60°C
● Standard kit	Drive motor&wired control box
● Quick release with rope	Including
● Chain hoist module	Optional
● Optional sensing edge set (TX and RX)	Optional



No active closing edge protection necessary for doors up to 14m²
Soft-Start and Soft-Stop protect the door and reduce repair costs

Standard sectional doors with cylindrical cable drum

Door size(max.)	22m ²	Door weight(max.)	286 Kg	
-----------------	------------------	-------------------	--------	---

Vertical lift sectional doors with conical cable drum

Door size(max.)	18m ²	Door weight(max.)	234Kg	
-----------------	------------------	-------------------	-------	---

High lift sectional doors with cylindrical-conical cable drum

Door size(max.)	22m ²	Door weight(max.)	286Kg	
-----------------	------------------	-------------------	-------	---

LION 70



APPLICATION

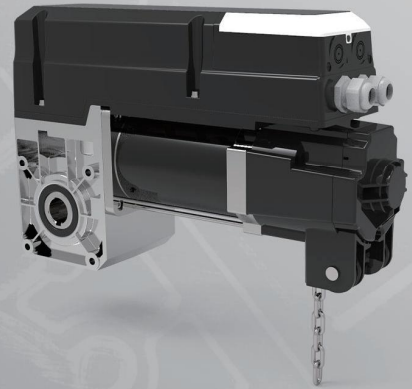
- Factory Industrial Doors
- Factory Industrial Doors
- Commercial Entrance Doors

Door Size Supported

- Upto 25 m2 Door Size Supported
- Upto 325 Kgs Door Weight Supported
- Upto 9. 0m Door High Supported

Door Type Supported

- Sandwich Insulated Garage/ Industrial Doors
- Alu Panoramaor CommercialIndustrial Doors



.AUTO ADJUSTED FORCE SYSTEM (AAFS)

- SMART CALCULATION SYSTEM
- EASIEST INSTALLATION
- AUTO SELECTED FORCE SYSTEM
- THE BEST POINT OF POWER, SMOOTHNESS AND SILENCE
- AUTO-LEARNING SYSTEM FOR EVERY RUNNING



.DC DRIVE

- SAFETY ENSURANCE
- SOFT START&SOFT STOP
- SILENTLY RUNNING
- AUTOMATICALLY OBSTACLE REVETRSE

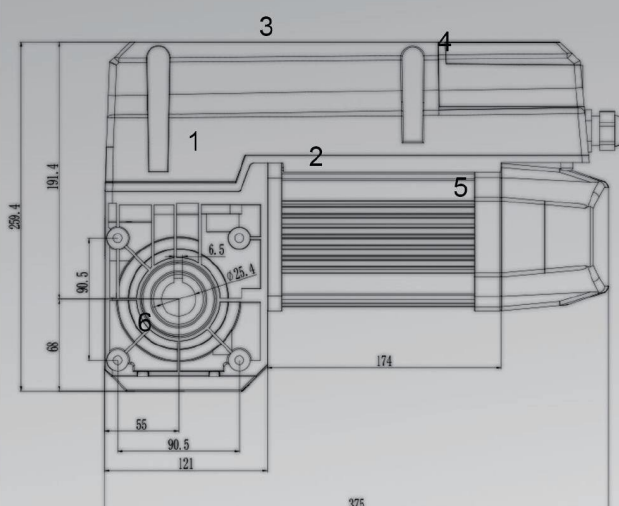


.CERCULATION CLUTCH

- PLUGGABLE CLUTCH
- CONVENIENT FOR MANUALLY OPENING
- PATENTED DESIGN

PARAMETER. LION 70

- 1 Gearbox
- 2 Motor
- 3 Casing
- 4 Flip
- 5 Rear trim cover
- 6 Front clutch



Maximum Output torque	70Nm
Fated output torque	50Nm
Input voltage	110/220(1+10%)V 60HZ/50Hz 380v-420V
Control system	24V DC
Motor power	0.55Kw
Static holding torque	400Nm
Max. output speed	24rpm-32rpm
Operation limit turns (limit travel)	15 turns of output shaft (max. 8.0m lifting height recommend)
Sleeve shaft diameter (standard)	φ25.4mm
Keyway size	6.3mm
Thermal protection temperature	105°C
Continuous sound pressure level	<70dB
Max. cycles per hour	20
IP protection class	IP54
Temperature range	- 20°C /+ 60°C
Standard kit	Drive motor&wired control box
Chain hoist module	Including
Optional sensing edge set (TX and RX)	Optional

No active closing edge protection necessary for doors up to 14m²
Soft-Start and Soft-Stop protect the door and reduce repair costs

Standard sectional doors with cylindrical cable drum

Door size(max.) **28m²** Door weight(max.) **364kg** 

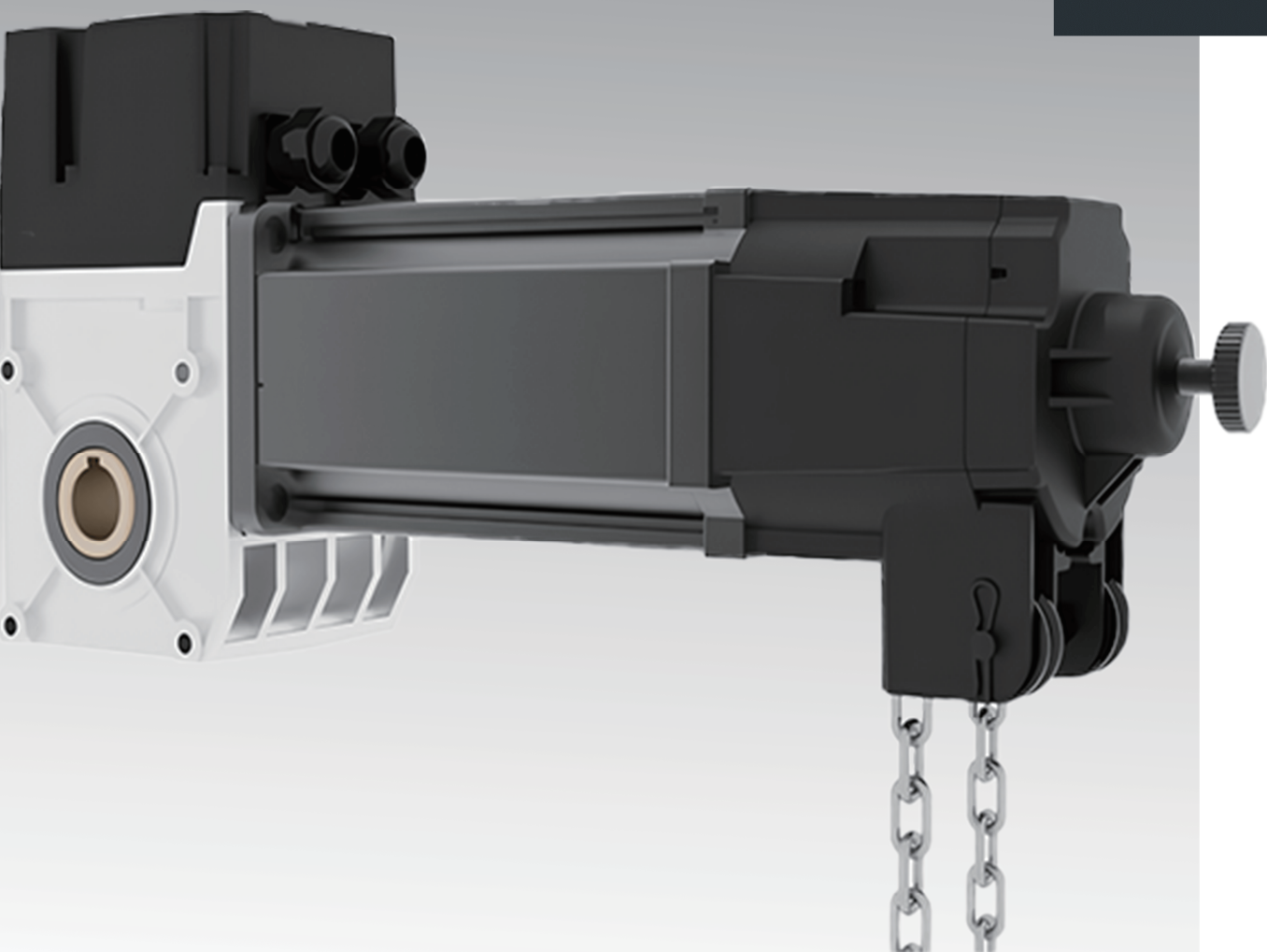
Vertical lift sectional doors with conical cable drum

Door size(max.) **24m²** Door weight(max.) **312kg** 

High lift sectional doors with cylindrical-conical cable drum

Door size(max.) **28m²** Door weight(max.) **364kg** 

BEAR

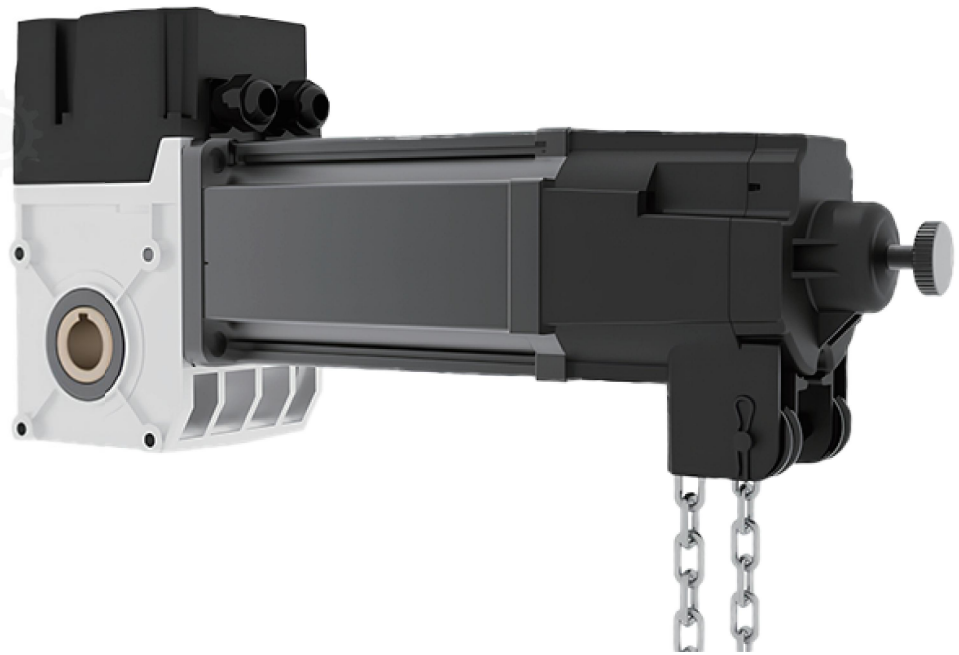


AC series

Automation for Industrial Doors

PARAMETER . BEAR 90

Rated output torque(N.m)	90 N.m
Out speed (rpm) f=(200-65Hz)	24 rpm
Output shaft/hollow shaft (mm)	Φ25.4 mm/Φ31.75mm
Static holding torque (N.m)	400 N.m
Door area(m ²)	≤30m ²
Input voltage (V)	110V/220V(1+10%),Or 380V-420V
Frequency (Hz)	50HZ
Motor power (KW)	0.6KW
Current (A)	3.0A
Control system	24V DC
Thermal protection temperature (°C)	105°C
Max. cycles per hour (Cycle)	20 cycle
Class of protection	IP 54
Limit switch range (maximum revolutions of output shaft / hollow	15 tums
Duty rating	S3=40%ED
Temperature range (°C)	-20°C ~+ 60 °C



■ Standard sectional doors with cylindrical cable drum

Door size(max.)	30m ²
Door weight(max.)	390kg

High lift sectional door with cylindrical-conical cable drum

Door size(max.)	30m ²
Door weight(max.)	390kg

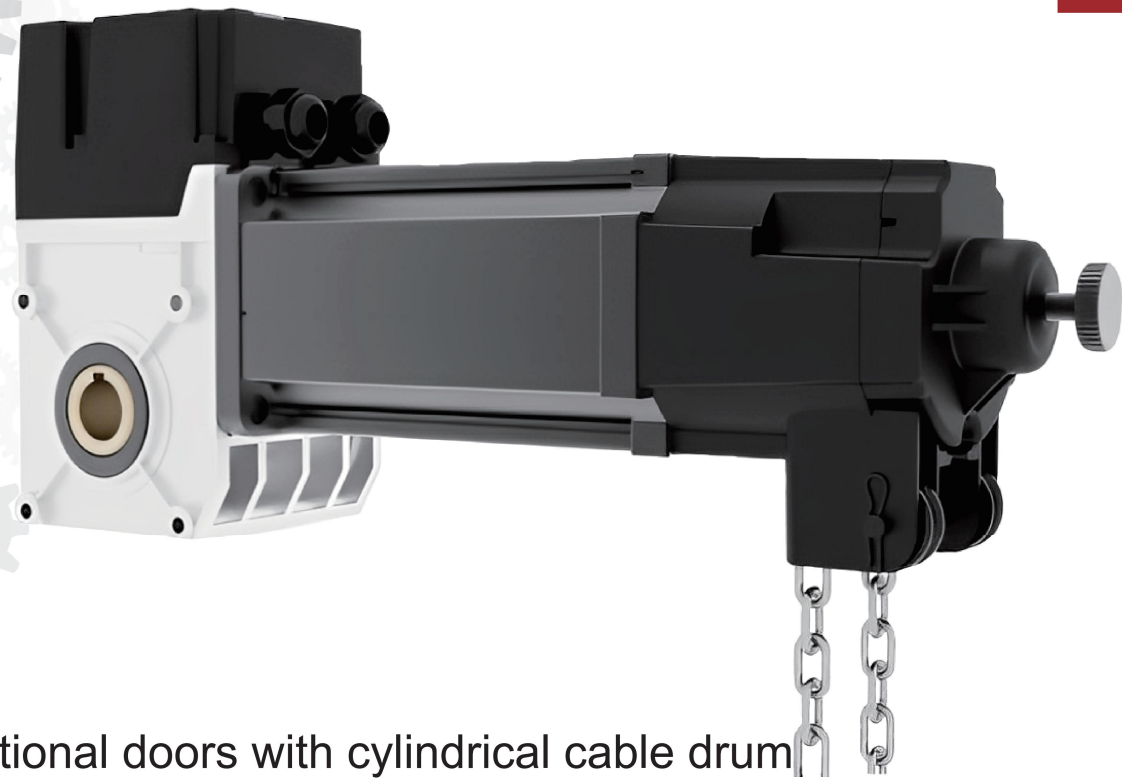
Vertical lift sectional doors with conical cable drum

Door size(max.)	30m ²
Door weight(max.)	390kg



PARAMETER . BEAR 140

Rated output torque(N.m)	140 N.m
Out speed (rpm) f=(20-65Hz)	24 rpm
Output shaft/hollow shaft (mm)	Φ25.4 mm/Φ31.75mm
Static holding torque (N.m)	400 N.m
Door area(m ²)	≤40m ²
Input voltage (V)	110V/220V(1+10%),Or 380V-420V
Frequency (Hz)	50HZ
Motor power (KW)	0.85KW
Current (A)	3.1A
Control system	24V DC
Thermal protection temperature (°C)	105°C
Max. cycles per hour (Cycle)	20 cycle
Class of protection	IP 54
Limit switch range (maximum revolutions of output shaft / hollow	15 tums
Duty rating	S3=40%ED
Temperature range (°C)	-20°C~+ 60 °C



■ Standard sectional doors with cylindrical cable drum

Door size(max.) 45m²

Door weight(max.) 580kg

High lift sectional door with cylindrical-conical cable drum

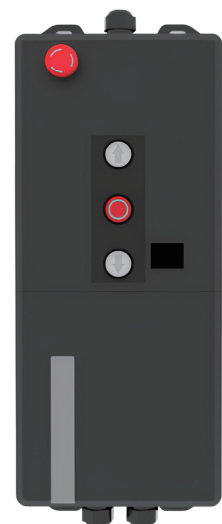
Door size(max.) 45m²

Door weight(max.) 580kg

Vertical lift sectional doors with conical cable drum

Door size(max.) 45m²

Door weight(max.) 580kg





More silence

- Low noise gear motor technology
- Testing volume $\leq 55\text{dB}$



More smoothness

- Oil immersed gear system
- Rubber sealed gear box



More stable

- Soft-start & Soft-stop
- Speed slow-down on every stop
- Strictly protecting your garage door

AAS system

- Make high-speed operation possible
- Make speed adjustment intelligent



Quick installation

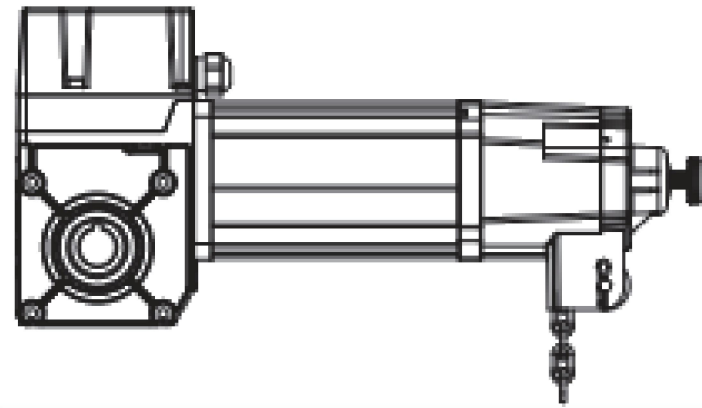
- Quick circulation gear clutch design
- Quick pluggable manually chain hoist clutch



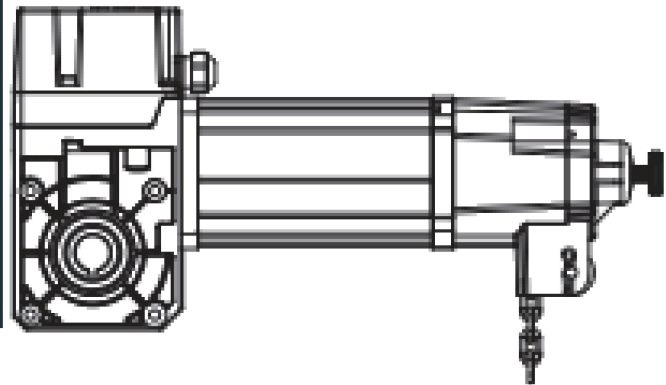
Higher speed

- Rated loading running speed 160mm/s
- Maximum running speed 280mm/s





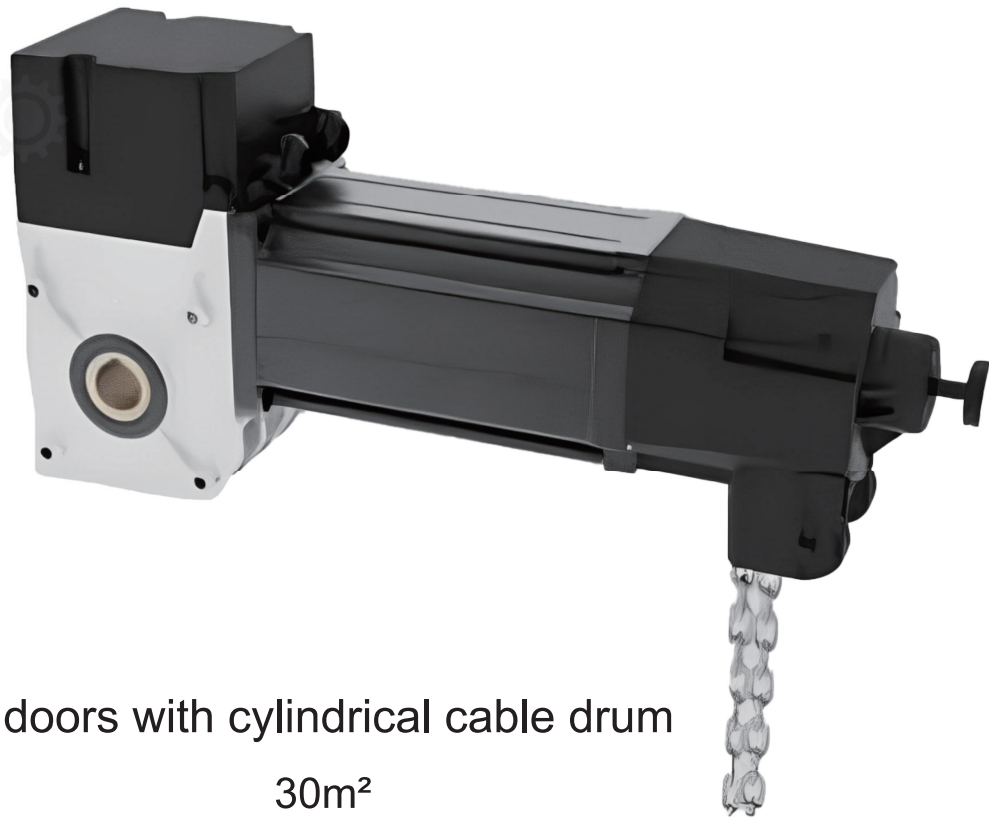
INDUSTRIAL DOOR DRIVE



FC INDUSTRIAL DOOR DRIVE

PARAMETER . FC 90

Rated output torque(N.m)	90 N.m
Maximum output torque	100 Nm
Output shaft/hollow shaft (mm)	Φ25.4 mm/Φ31.75mm
Static holding torque (N.m)	400 N.m
Max. output speed	12rpm-32rpm
Input voltage (V)	110V/220V(1+10%),380V~420V
Limit switch range	15 turns
Motor power (KW)	0.6KW
Current	3.0A
Control system	24V DC
Thermal protection temperature (°C)	105°C
Max. cycles per hour (Cycle)	20 cycles
Class of protection	IP 54
Duty rating	S3=40%ED
Temperature range (°C)	-20°C ~+ 60 °C



■ Standard sectional doors with cylindrical cable drum

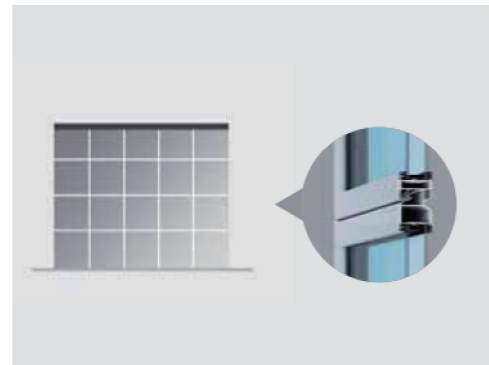
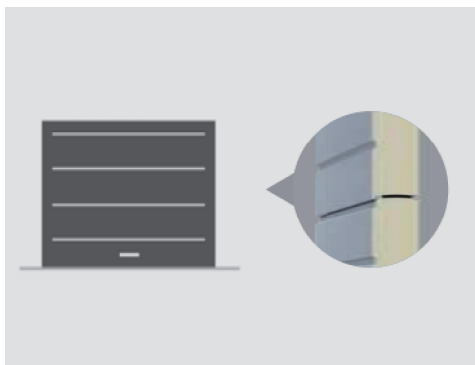
Door size(max.)	30m ²
Door weight(max.)	390kg

High lift sectional door with cylindrical-conical cable drum

Door size(max.)	30m ²
Door weight(max.)	390kg

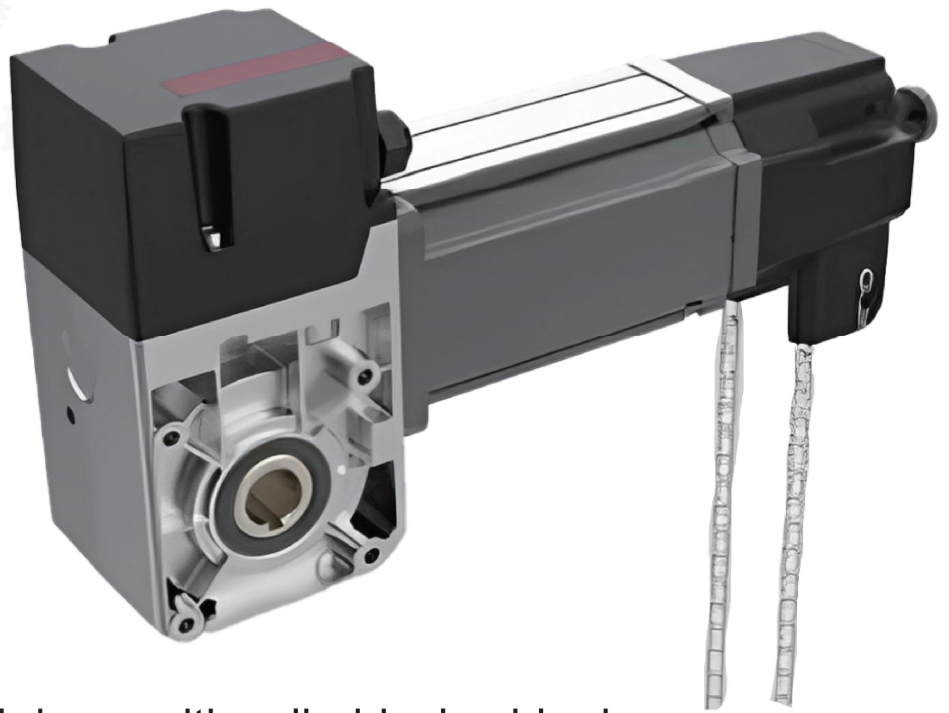
Vertical lift sectional doors with conical cable drum

Door size(max.)	30m ²
Door weight(max.)	390kg



PARAMETER . FC 120

Rated output torque(N.m)	120 N.m
Maximum output torque	140 Nm
Output shaft/hollow shaft (mm)	Φ25.4 mm/Φ31.75mm
Static holding torque (N.m)	400 N.m
Max. output speed	12rpm-32rpm
Input voltage (V)	110V/220V(1+10%),380V~420V
Limit switch range	15 turns
Motor power (KW)	0.85KW
Current	3.1A
Control system	24V DC
Thermal protection temperature (°C)	105°C
Max. cycles per hour (Cycle)	20 cycles
Class of protection	IP 54
Duty rating	S3=40%ED
Temperature range (°C)	-20°C ~+ 60 °C



■ Standard sectional doors with cylindrical cable drum

Door size(max.)	40m ²
Door weight(max.)	520kg

High lift sectional door with cylindrical-conical cable drum

Door size(max.)	40m ²
Door weight(max.)	520kg

Vertical lift sectional doors with conical cable drum

Door size(max.)	40m ²
Door weight(max.)	520kg

