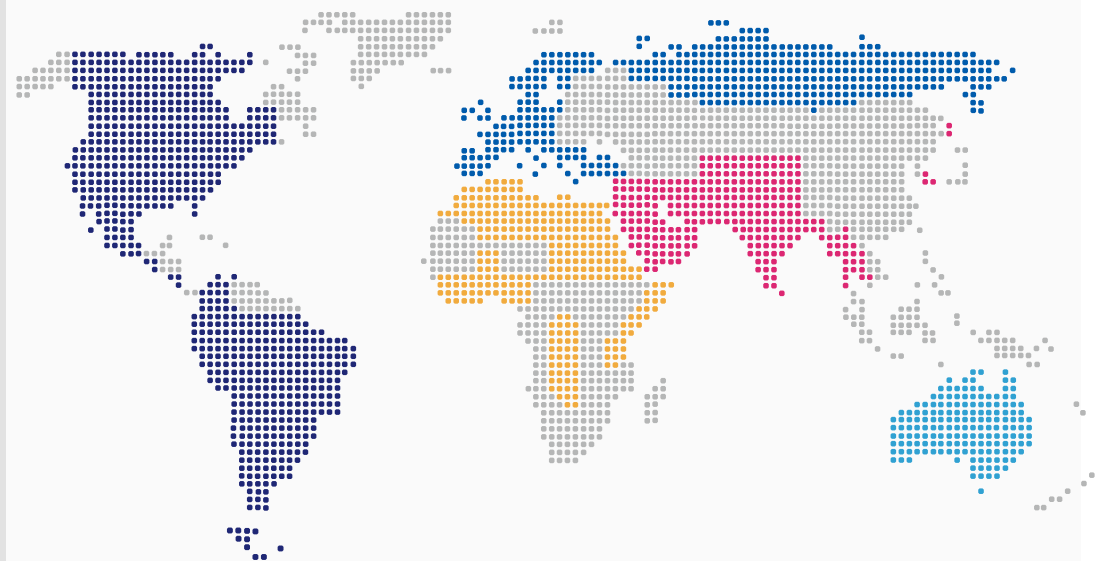




Side motor is a kind of motor which is installed at the side of one shutter door. It is a long year's technology, as this type motor is stronger in power, markets accept it as a very popular choice for heavy doors, such as factory doors, industrial doors, front-shops and etc.

SIMPLE produces side motors, mainly 300Kgs AC, 600Kgs AC, 800Kgs AC, 1000Kgs AC, 1500Kgs AC, 2000Kgs AC and 300Kgs DC, 600Kgs DC motors are widely sold to Mid-East, South-America and etc. with a good reputation.



- Asian market
  - Singapore
  - Korea
  - India
  - Lebanon
  - Turkey
  - Israel
- African market
  - Egypt
  - Morocco
  - Libya
  - Algeria
- American market
  - Brazil
  - Peru
  - Argentina
  - Chile
  - Uruguay
  - Ecuador
- Australia market
  - America
  - Canada
  - Mexico
- European market
  - Germany
  - Greece
  - Spain
  - Italy
  - Hungary

# SIDE MOTOR

## PRODUCT INFORMATION

For more information, please visit our website: [www.China-develop.com](http://www.China-develop.com)



HUZHOU DP IMPORT & EXPORT CO., LTD  
 Tel: +86 572 6267780/6031263  
 Email: [dp@China-develop.com](mailto:dp@China-develop.com) Web:  
[www.China-develop.com](http://www.China-develop.com)



HUZHOU SIMPLE TECHNOLOGY CO., LTD  
 Add: MeiShan Economic Zone, 313117, Changxing, Zhejiang, China  
 Tel: +86 572 6660505-809  
 Web: [www.China-develop.com](http://www.China-develop.com)

# AC SIDE MOTOR-1P

## PRODUCT FEATURES

- Easy to install and maintain with long working life.
- Powerful, low noise, lower energy consumption.
- When power is off, it can be operated to open and close the door by manual chain.
- Accurate limit controls shutter up, down and stop.
- 4 micro switches and 4 relays improve motors much safer during awful weather and environment.
- With safety equipment.
- Depend on different countries, the voltage is from 110V~230V and frequency is from 50Hz~60Hz.



## Single Phase Side Motor Specifications and Technical Parameters

Model	Input Power (W)	Max. Elev. Distance (M)	Max. Lifting Weight (KG)	Output Torque (N.m)	Output Speed (R/min)	Protection
DP300AC	500	6	300	168	6.2	IP44
DP600AC	565	6	600	412	6	IP44
DP800AC	690	9	800	647	4.6	IP44
DP1000AC	700	9	1000	809	4.4	IP44

## Accessories:



# AC SIDE MOTOR-3P

## PRODUCT FEATURES

- Same functions as AC single phase side motor.
- The voltage is 380V and frequency is 50Hz.
- Three-phase side motor series are from 600Kgs AC to 2000Kgs AC.
- Working with control box or remote control system.
- For big and heavy industry shutters, warehouse shutters, it is more powerful and steady.



## Three Phase Side Motor Specifications and Technical Parameters

Model	Input Power (W)	Max. Elev. Distance (M)	Max. Lifting Weight (KG)	Output Torque (N.m)	Output Speed (R/min)	Protection
DP600AC-3P	250	6	600	412	6	IP44
DP800AC-3P	350	9	800	647	4.6	IP44
DP1000AC-3P	400	9	1000	809	4.5	IP44
DP1500AC-3P	900	9	1500	1617	4.4	IP44
DP2000AC-3P	1000	12	2000	2450	3.6	IP44

## Accessories:



# DC SIDE MOTOR

## PRODUCT FEATURES

- Same functions as AC single phase side motor.
- Working with UPS control system.
- The UPS reserves power automatically, which can ensure motor run about 20 times in normal if power is off.
- The UPS control system works automatically.
- Battery in UPS is 24V/5A.



## DC Side Motor Specifications and Technical Parameters

Model	Input Power (W)	Max. Elev. Distance (M)	Max. Lifting Weight (KG)	Output Torque (N.m)	Output Speed (R/min)	Protection
DP300DC	220	6	300	168	6	IP44
DP600DC	240	6	600	412	6	IP44

## Accessories:

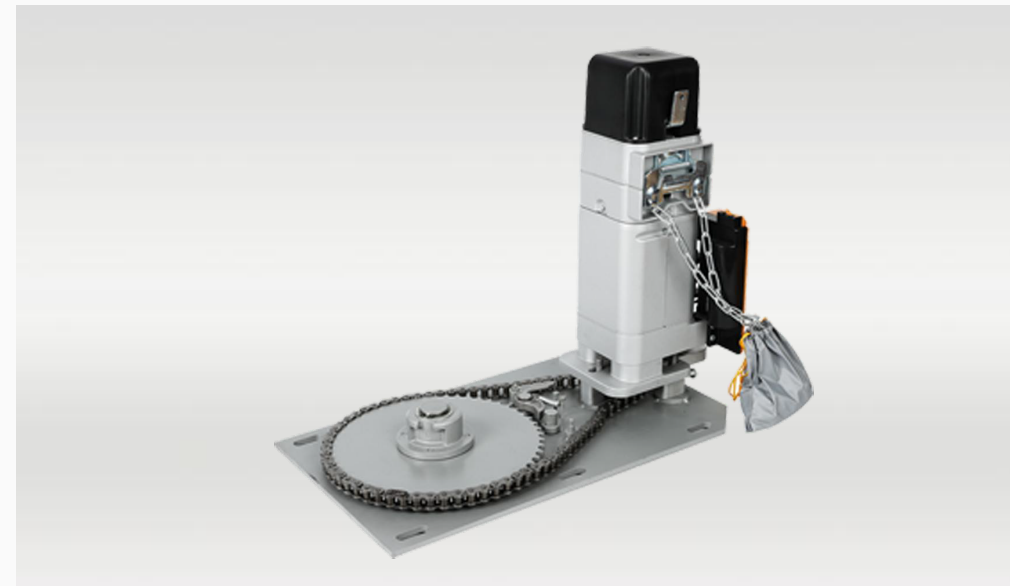




# AC SIDE MOTOR-NEW

## PRODUCT FEATURES

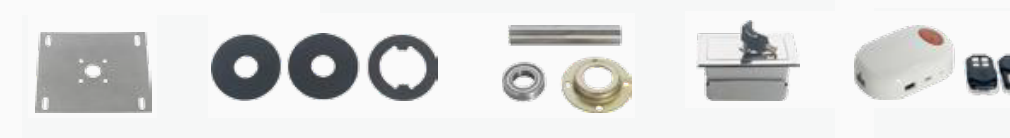
- Easy to install and maintain with long working life.
- Powerful, low noise, lower energy consumption.
- When power is off, it can be operated to open and close the door by manual chain.
- Accurate limit controls shutter up, down and stop.
- 4 micro switches and 4 relays improve motors much safer during awful weather and environment.
- With safety equipment.
- Depend on different countries, the voltage is from 110V~230V and frequency is from 50Hz~60Hz.



## Single Phase Side Motor Specifications and Technical Parameters

Model	Input Power (W)	Max. Elev. Distance (M)	Max. Lifting Weight (KG)	Output Torque (N.m)	Output Speed (R/min)	Protection
FBL600A	600	6	600	412	5.2	IP44
FBL600B	600	6	600	412	5.5	IP44
FBT700A	680	6	700	480	5.2	IP44
FBT700B	680	6	700	480	5.5	IP44

## Accessories:



## Selectable accessories:



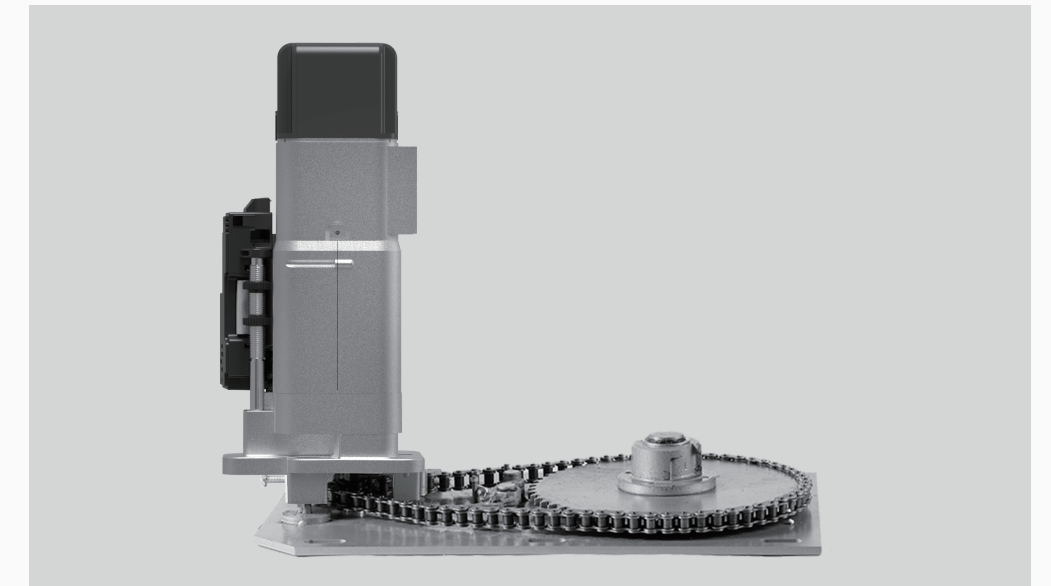
# Product picture



# AS SIDE MOTOR

## PROUDCT FEATURES

- Easy to install and maintain with long working life.
- Powerful, low noise, lower energy consumption.
- When power is off, it can be operated to open and close the door by manual chain.
- Accurate limit controls shutter up, down and stop.
- 4 micro switches and 4 relays improve motors much safer during awful weather and environment.
- With safety equipment.
- Depend on different countries, the voltage is from 110V~230V and frequency is from 50Hz~60Hz.



## Single Phase Side Motor Specifications and Technical Parameters

Model	Input Power (W)	Max. Elev. Distance (M)	Max. Lifting Weight (KG)	Output Torque (N.m)	Output Speed (R/min)	Protection
DP300AC	500	6	300	168	6.2	IP44
DP600AC	565	6	600	412	6	IP44
DP800AC	690	9	800	647	4.6	IP44
DP1000AC	700	9	1000	809	4.4	IP44

## Accessories:



## Selectable accessories:

