



Technology Drives The Future.



TUBULAR MOTOR

DP AUTOMATION

EFFICIENT LIFE,
COMFORTABLE LIFE,
QUALITY LIFE,
THE ACHIEVEMENT OF A
NEW MODEL OF A BETTER LIFE.



Tubular Motor

Tubular Motor is a kind of motor, its shape from outside looks like a tube, so we call it Tubular Motor.

Tubular Motor is a new technology, with about 30 years developing history in the world. Now it is widely used for kinds of roller shutters, shutter windows and shutter doors, industrial doors, etc.

SIMPLE is a professional factory that dedicated in big type tubular motors, especially the torque from 50N.m to 550N.m motors.

SIMPLE produces tubular motors which are widely sold to Europe, USA, Turkey, Mid-East, Asia, South America etc with a good reputation.



81SFDC



DC Motor Electronic Limit Fast Speed

81SFDC

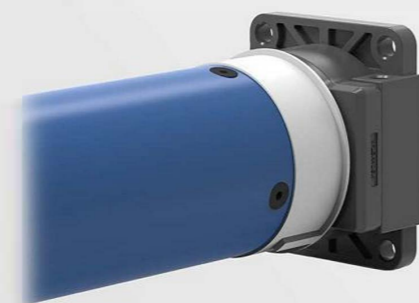
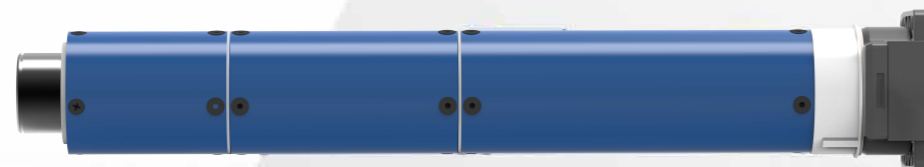
81mm in diameter, 30Nm and 120Nm. Standard type.
Electronic limit. Fast speed type. CE, CCC and TUV approved.

Technical Specifications

| RATED TORQUE (Nm) | RATED VOLTAGE (V) | RATED FREQUENCY (Hz) | RATED POWER INPUT (W) | TUBE DIAMETER (mm) | RATED CURRENT (A) | RATED SPEED (rpm) | PROTECTION INDEX (IP) | INSULATION CLASS |
|----------------------|----------------------|-------------------------|--------------------------|-----------------------|----------------------|----------------------|--------------------------|------------------|
| 30N.m | 24V/DC | 50/60Hz | 460W | 81mm | 20A | 108rpm | Ip44 | Class H |
| 120N.m | 24V/DC | 50/60Hz | 720W | 81mm | 30A | 30rpm | Ip44 | Class H |

92SEFC

Standard Type Electronic Limit Frequency Conversion



92SEFC

92mm in diameter, 160N.m ~ 300N.m. Standard type. Electronic limit and Frequency conversion. CE, CCC and TUV approved. Ideal for rolling shutter etc.

Technical Specifications

| RATED TORQUE (Nm) | RATED VOLTAGE (V) | RATED FREQUENCY (Hz) | RATED POWER INPUT (W) | TUBE DIAMETER (mm) | RATED CURRENT (A) | RUNNING TIME (min) | RATED SPEED (rpm) | PROTECTION INDEX (IP) | INSULATION CLASS |
|----------------------|----------------------|-------------------------|--------------------------|-----------------------|----------------------|-----------------------|----------------------|--------------------------|------------------|
| 160N.m | 230V | 50Hz | 830W | 92mm | 3.60A | S2 4min | 32rpm | Ip44 | Class H |
| 200N.m | 230V | 50Hz | 820W | 92mm | 3.55A | S2 4min | 30rpm | Ip44 | Class H |
| 230N.m | 230V | 50Hz | 870W | 92mm | 3.80A | S2 4min | 21rpm | Ip44 | Class H |
| 300N.m | 230V | 50Hz | 850W | 92mm | 3.70A | S2 4min | 16rpm | Ip44 | Class H |

► 110V/60HZ is also available; please ask our sales team for details.

92MEFC

Manual Type Electronic Limit Frequency Conversion



92MEFC

92mm in diameter, 160N.m ~ 300N.m. Manual override type. Electronic limit and Frequency conversion. CE, CCC and TUV approved. Ideal for rolling shutter etc.

Technical Specifications

| RATED TORQUE (Nm) | RATED VOLTAGE (V) | RATED FREQUENCY (Hz) | RATED POWER INPUT (W) | TUBE DIAMETER (mm) | RATED CURRENT (A) | RUNNING TIME (min) | RATED SPEED (rpm) | PROTECTION INDEX (IP) | INSULATION CLASS |
|----------------------|----------------------|-------------------------|--------------------------|-----------------------|----------------------|-----------------------|----------------------|--------------------------|------------------|
| 160N.m | 230V | 50Hz | 830W | 92mm | 3.60A | S2 4min | 32rpm | Ip44 | Class H |
| 200N.m | 230V | 50Hz | 820W | 92mm | 3.55A | S2 4min | 30rpm | Ip44 | Class H |
| 230N.m | 230V | 50Hz | 870W | 92mm | 3.80A | S2 4min | 21rpm | Ip44 | Class H |
| 300N.m | 230V | 50Hz | 850W | 92mm | 3.70A | S2 4min | 16rpm | Ip44 | Class H |

► 110V/60HZ is also available; please ask our sales team for details.

92LEFC

Manual Type Electronic Limit Frequency Conversion



92LEFC

92mm in diameter, 160N.m ~ 300N.m. Manual override type. Electronic limit and Frequency conversion. CE, CCC and TUV approved. Ideal for rolling shutter etc.

Technical Specifications

| RATED TORQUE (Nm) | RATED VOLTAGE (V) | RATED FREQUENCY (Hz) | RATED POWER INPUT (W) | TUBE DIAMETER (mm) | RATED CURRENT (A) | RUNNING TIME (min) | RATED SPEED (rpm) | PROTECTION INDEX (IP) | INSULATION CLASS |
|----------------------|----------------------|-------------------------|--------------------------|-----------------------|----------------------|-----------------------|----------------------|--------------------------|------------------|
| 160N.m | 230V | 50Hz | 830W | 92mm | 3.60A | S2 4min | 32rpm | Ip44 | Class H |
| 200N.m | 230V | 50Hz | 820W | 92mm | 3.55A | S2 4min | 30rpm | Ip44 | Class H |
| 230N.m | 230V | 50Hz | 870W | 92mm | 3.80A | S2 4min | 21rpm | Ip44 | Class H |
| 300N.m | 230V | 50Hz | 850W | 92mm | 3.70A | S2 4min | 16rpm | Ip44 | Class H |

► 110V/60HZ is also available; please ask our sales team for details.

92SFC

Standard Type Frequency Conversion Mechanical Limit



92SFC

92mm in diameter, 160N.m - 300N.m. Standard type. Mechanical limit and Frequency conversion. CE, CCC and TUV approved. Ideal for rolling shutter etc

Technical Specifications

| RATED TORQUE (Nm) | RATED VOLTAGE (V) | RATED FREQUENCY (Hz) | RATED POWER INPUT (W) | TUBE DIAMETER (mm) | RATED CURRENT (A) | RUNNING TIME (min) | RATED SPEED (rpm) | PROTECTION INDEX (IP) | INSULATION CLASS |
|-------------------|-------------------|----------------------|-----------------------|--------------------|-------------------|--------------------|-------------------|-----------------------|------------------|
| 160N.m | 230V | 50Hz | 830W | 92mm | 3.60A | S2 4min | 32rpm | Ip44 | Class H |
| 200N.m | 230V | 50Hz | 820W | 92mm | 3.55A | S2 4min | 30rpm | Ip44 | Class H |
| 230N.m | 230V | 50Hz | 870W | 92mm | 3.80A | S2 4min | 21rpm | Ip44 | Class H |
| 300N.m | 230V | 50Hz | 850W | 92mm | 3.70A | S2 4min | 16rpm | Ip44 | Class H |

► 110V/60HZ is also available; please ask our sales team for details.

92MFC

Manual Type Frequency Conversion Mechanical Limit



92MFC

92mm in diameter, 160N.m - 300N.m. Manual override type. Mechanical limit and Frequency conversion. CE, CCC and TUV approved. Ideal for rolling shutter etc

Technical Specifications

| RATED TORQUE (Nm) | RATED VOLTAGE (V) | RATED FREQUENCY (Hz) | RATED POWER INPUT (W) | TUBE DIAMETER (mm) | RATED CURRENT (A) | RUNNING TIME (min) | RATED SPEED (rpm) | PROTECTION INDEX (IP) | INSULATION CLASS |
|----------------------|----------------------|-------------------------|--------------------------|-----------------------|----------------------|-----------------------|----------------------|--------------------------|------------------|
| 160N.m | 230V | 50Hz | 830W | 92mm | 3.60A | S2 4min | 32rpm | Ip44 | Class H |
| 200N.m | 230V | 50Hz | 820W | 92mm | 3.55A | S2 4min | 30rpm | Ip44 | Class H |
| 230N.m | 230V | 50Hz | 870W | 92mm | 3.80A | S2 4min | 21rpm | Ip44 | Class H |
| 300N.m | 230V | 50Hz | 850W | 92mm | 3.70A | S2 4min | 16rpm | Ip44 | Class H |

► 110V/60HZ is also available; please ask our sales team for details.

92LFC

Manual Type Frequency Conversion Mechanical Limit



92LFC

92mm in diameter, 160N.m - 300N.m. Manual override type. Mechanical limit and Frequency conversion. CE, CCC and TUV approved. Ideal for rolling shutter etc

Technical Specifications

| RATED TORQUE (Nm) | RATED VOLTAGE (V) | RATED FREQUENCY (Hz) | RATED POWER INPUT (W) | TUBE DIAMETER (mm) | RATED CURRENT (A) | RUNNING TIME (min) | RATED SPEED (rpm) | PROTECTION INDEX (IP) | INSULATION CLASS |
|----------------------|----------------------|-------------------------|--------------------------|-----------------------|----------------------|-----------------------|----------------------|--------------------------|------------------|
| 160N.m | 230V | 50Hz | 830W | 92mm | 3.60A | S2 4min | 32rpm | Ip44 | Class H |
| 200N.m | 230V | 50Hz | 820W | 92mm | 3.55A | S2 4min | 30rpm | Ip44 | Class H |
| 230N.m | 230V | 50Hz | 870W | 92mm | 3.80A | S2 4min | 21rpm | Ip44 | Class H |
| 300N.m | 230V | 50Hz | 850W | 92mm | 3.70A | S2 4min | 16rpm | Ip44 | Class H |

► 110V/60HZ is also available; please ask our sales team for details.

92SE



92SE

92mm in diameter, 160N.m ~ 300N.m. Standard type. Electronic limit, CE, CCC and TUV approved. Ideal for rolling shutter etc.

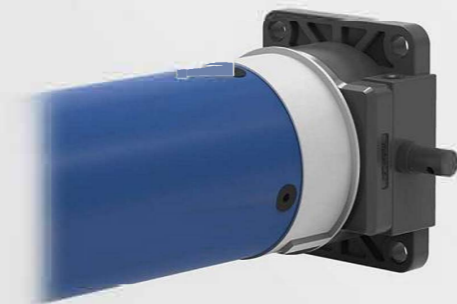
Standard Type Electronic Limit

Technical Specifications

| RATED TORQUE (Nm) | RATED VOLTAGE (V) | RATED FREQUENCY (Hz) | RATED POWER INPUT (W) | TUBE DIAMETER (mm) | RATED CURRENT (A) | RUNNING TIME (min) | RATED SPEED (rpm) | PROTECTION INDEX (IP) | INSULATION CLASS |
|----------------------|----------------------|-------------------------|--------------------------|-----------------------|----------------------|-----------------------|----------------------|--------------------------|------------------|
| 160N.m | 230V | 50Hz | 830W | 92mm | 3.60A | S2 4min | 18rpm | Ip44 | Class H |
| 200N.m | 230V | 50Hz | 820W | 92mm | 3.55A | S2 4min | 16rpm | Ip44 | Class H |
| 230N.m | 230V | 50Hz | 870W | 92mm | 3.80A | S2 4min | 12rpm | Ip44 | Class H |
| 300N.m | 230V | 50Hz | 850W | 92mm | 3.70A | S2 4min | 9rpm | Ip44 | Class H |

► 110V/60HZ is also available; please ask our sales team for details.

92ME



Manual Type Electronic Limit

92LE

92mm in diameter, 160N.m ~ 300N.m. Manual override type. Electronic limit. CE, CCC and TUV approved. Ideal for rolling shutter etc.

Technical Specifications

| RATED TORQUE (Nm) | RATED VOLTAGE (V) | RATED FREQUENCY (Hz) | RATED POWER INPUT (W) | TUBE DIAMETER (mm) | RATED CURRENT (A) | RUNNING TIME (min) | RATED SPEED (rpm) | PROTECTION INDEX (IP) | INSULATION CLASS |
|----------------------|----------------------|-------------------------|--------------------------|-----------------------|----------------------|-----------------------|----------------------|--------------------------|------------------|
| 160N.m | 230V | 50Hz | 830W | 92mm | 3.60A | S2 4min | 18rpm | Ip44 | Class H |
| 200N.m | 230V | 50Hz | 820W | 92mm | 3.55A | S2 4min | 16rpm | Ip44 | Class H |
| 230N.m | 230V | 50Hz | 870W | 92mm | 3.80A | S2 4min | 12rpm | Ip44 | Class H |
| 300N.m | 230V | 50Hz | 850W | 92mm | 3.70A | S2 4min | 9rpm | Ip44 | Class H |

► 110V/60HZ is also available; please ask our sales team for details.

92LE



92LE

92mm in diameter, 160N.m ~ 300N.m. Manual override type. Electronic limit. CE, CCC and TUV approved. Ideal for rolling shutter etc.

Manual Type Electronic Limit

Technical Specifications

| RATED TORQUE (Nm) | RATED VOLTAGE (V) | RATED FREQUENCY (Hz) | RATED POWER INPUT (W) | TUBE DIAMETER (mm) | RATED CURRENT (A) | RUNNING TIME (min) | RATED SPEED (rpm) | PROTECTION INDEX (IP) | INSULATION CLASS |
|----------------------|----------------------|-------------------------|--------------------------|-----------------------|----------------------|-----------------------|----------------------|--------------------------|------------------|
| 160N.m | 230V | 50Hz | 830W | 92mm | 3.60A | S2 4min | 18rpm | Ip44 | Class H |
| 200N.m | 230V | 50Hz | 820W | 92mm | 3.55A | S2 4min | 16rpm | Ip44 | Class H |
| 230N.m | 230V | 50Hz | 870W | 92mm | 3.80A | S2 4min | 12rpm | Ip44 | Class H |
| 300N.m | 230V | 50Hz | 850W | 92mm | 3.70A | S2 4min | 9rpm | Ip44 | Class H |

► 110V/60HZ is also available; please ask our sales team for details.



TUBULAR MOTOR

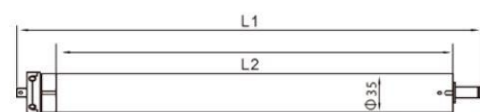
To be a Creator

We are more than a producer for products,
but a creator for a better life.

We are engaged in the promotion for a comfortable,
safe and efficient life.

See more at: www.china-develop.com

35S



Standard Type

35S

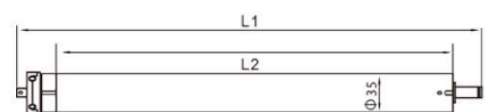
35mm in diameter, 6N.m ~ 13N.m. Standard type. Stable quality with attractive prices. CE, CCC and TUV approved. Ideal for rolling blind, awning, screen and etc.

Technical Specifications

| RATED TORQUE (Nm) | RATED VOLTAGE (V) | RATED FREQUENCY (Hz) | RATED POWER INPUT (W) | TUBE DIAMETER (mm) | RATED CURRENT (A) | RUNNING TIME (min) | RATED SPEED (rpm) | PROTECTION INDEX (IP) | INSULATION CLASS |
|----------------------|----------------------|-------------------------|--------------------------|-----------------------|----------------------|-----------------------|----------------------|--------------------------|------------------|
| 6N.m | 230V | 50Hz | 140W | 35mm | 0.65A | S2 4min | 28rpm | Ip44 | Class F |
| 10N.m | 230V | 50Hz | 145W | 35mm | 0.65A | S2 4min | 17rpm | Ip44 | Class F |
| 13N.m | 230V | 50Hz | 170W | 35mm | 0.75A | S2 4min | 14rpm | Ip44 | Class F |

► 110V/60HZ is also available; please ask our sales team for details.

35SR



35SR

35mm in diameter, 6N.m ~ 13N.m. Standard & built-in receiver type. Stable quality with attractive prices. CE, CCC and TUV approved. Ideal for rolling blind, awning, screen and etc.

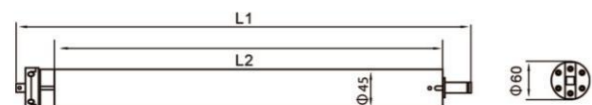
Standard Type Built-In Receiver

Technical Specifications

| RATED TORQUE (Nm) | RATED VOLTAGE (V) | RATED FREQUENCY (Hz) | RATED POWER INPUT (W) | TUBE DIAMETER (mm) | RATED CURRENT (A) | RUNNING TIME (min) | RATED SPEED (rpm) | PROTECTION INDEX (IP) | INSULATION CLASS |
|----------------------|----------------------|-------------------------|--------------------------|-----------------------|----------------------|-----------------------|----------------------|--------------------------|------------------|
| 6N.m | 230V | 50Hz | 140W | 35mm | 0.65A | S2 4min | 28rpm | Ip44 | Class F |
| 10N.m | 230V | 50Hz | 145W | 35mm | 0.71A | S2 4min | 17rpm | Ip44 | Class F |
| 13N.m | 230V | 50Hz | 170W | 35mm | 0.75A | S2 4min | 14rpm | Ip44 | Class F |

► 110V/60HZ is also available; please ask our sales team for details.

45S



45S

45mm in diameter, 10N.m ~ 60N.m. Standard type. Stable quality with attractive prices. CE, CCC and TUV approved. Ideal for rolling blind, screen, awning, rolling shutter and etc.

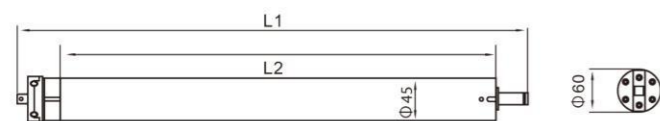
**Standard
Type**

Technical Specifications

| RATED TORQUE (Nm) | RATED VOLTAGE (V) | RATED FREQUENCY (Hz) | RATED POWER INPUT (W) | TUBE DIAMETER (mm) | RATED CURRENT (A) | RUNNING TIME (min) | RATED SPEED (rpm) | PROTECTION INDEX (IP) | INSULATION CLASS |
|----------------------|----------------------|-------------------------|--------------------------|-----------------------|----------------------|-----------------------|----------------------|--------------------------|------------------|
| 10N.m | 230V | 50Hz | 155W | 45mm | 0.70A | S2 4min | 15rpm | Ip44 | Class F |
| 20N.m | 230V | 50Hz | 168W | 45mm | 0.75A | S2 4min | 15rpm | Ip44 | Class F |
| 20N.m | 230V | 50Hz | 238W | 45mm | 1.05A | S2 4min | 28rpm | Ip44 | Class F |
| 30N.m | 230V | 50Hz | 203W | 45mm | 0.88A | S2 4min | 15rpm | Ip44 | Class F |
| 40N.m | 230V | 50Hz | 238W | 45mm | 1.05A | S2 4min | 15rpm | Ip44 | Class F |
| 50N.m | 230V | 50Hz | 262W | 45mm | 1.20A | S2 4min | 12rpm | Ip44 | Class F |
| 60N.m | 230V | 50Hz | 260W | 45mm | 1.25A | S2 4min | 10rpm | Ip44 | Class F |

► 110V/60HZ is also available; please ask our sales team for details.

45SR



45SR

45mm in diameter, 10N.m ~ 60N.m. Standard & built-in receiver type. Stable quality with attractive prices. CE, CCC and TUV approved. Ideal for rolling blind, screen, awning, rolling shutter and etc.

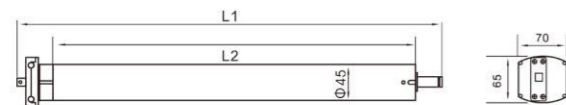
Standard Type Built-In Receiver

Technical Specifications

| RATED TORQUE (Nm) | RATED VOLTAGE (V) | RATED FREQUENCY (Hz) | RATED POWER INPUT (W) | TUBE DIAMETER (mm) | RATED CURRENT (A) | RUNNING TIME (min) | RATED SPEED (rpm) | PROTECTION INDEX (IP) | INSULATION CLASS |
|----------------------|----------------------|-------------------------|--------------------------|-----------------------|----------------------|-----------------------|----------------------|--------------------------|------------------|
| 10N.m | 230V | 50Hz | 155W | 45mm | 0.70A | S2 4min | 15rpm | Ip44 | Class F |
| 20N.m | 230V | 50Hz | 168W | 45mm | 0.75A | S2 4min | 15rpm | Ip44 | Class F |
| 20N.m | 230V | 50Hz | 238W | 45mm | 1.05A | S2 4min | 28rpm | Ip44 | Class F |
| 30N.m | 230V | 50Hz | 203W | 45mm | 0.88A | S2 4min | 15rpm | Ip44 | Class F |
| 40N.m | 230V | 50Hz | 238W | 45mm | 1.05A | S2 4min | 15rpm | Ip44 | Class F |
| 50N.m | 230V | 50Hz | 262W | 45mm | 1.20A | S2 4min | 12rpm | Ip44 | Class F |
| 60N.m | 239V | 50Hz | 260W | 45mm | 1.25A | S2 4min | 10rpm | Ip44 | Class F |

► 110V/60HZ is also available; please ask our sales team for details.

45M



45M

45mm in diameter, 10N.m ~ 60N.m. Manual override type. Stable quality with attractive prices. CE, CCC and TUV approved. Ideal for rolling blind, screen, awning, rolling shutter and etc.

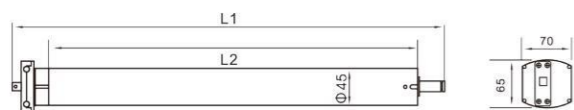
**Manual
Type**

Technical Specifications

| RATED TORQUE | RATED VOLTAGE | RATED FREQUENCY | RATED POWER INPUT | TUBE DIAMETER | RATED CURRENT | RUNNING TIME | RATED SPEED | PROTECTION INDEX | INSULATION CLASS |
|--------------|---------------|-----------------|-------------------|---------------|---------------|--------------|-------------|------------------|------------------|
| (Nm) | (V) | (Hz) | (W) | (mm) | (A) | (min) | (rpm) | (IP) | |
| 10N.m | 230V | 50Hz | 155W | 45mm | 0.70A | S2 4min | 15rpm | Ip44 | Class F |
| 20N.m | 230V | 50Hz | 168W | 45mm | 0.75A | S2 4min | 15rpm | Ip44 | Class F |
| 30N.m | 230V | 50Hz | 203W | 45mm | 0.88A | S2 4min | 15rpm | Ip44 | Class F |
| 40N.m | 230V | 50Hz | 220W | 45mm | 1.00A | S2 4min | 12rpm | Ip44 | Class F |
| 40N.m | 230V | 50Hz | 253W | 45mm | 1.10A | S2 4min | 18rpm | Ip44 | Class F |
| 50N.m | 230V | 50Hz | 225W | 45mm | 1.00A | S2 4min | 12rpm | Ip44 | Class F |
| 60N.m | 239V | 50Hz | 230W | 45mm | 1.00A | S2 4min | 9rpm | Ip44 | Class F |

► 110V/60HZ is also available; please ask our sales team for details.

45MR



45MR

45mm in diameter, 10N.m ~ 60N.m. Manual override & built-in receiver type. Stable quality with attractive prices. CE, CCC and TUV approved. Ideal for rolling blind and screen, awning, rolling shutter etc.

Manual Type Built-In Receiver

Technical Specifications

| RATED TORQUE | RATED VOLTAGE | RATED FREQUENCY | RATED POWER INPUT | TUBE DIAMETER | RATED CURRENT | RUNNING TIME | RATED SPEED | PROTECTION INDEX | INSULATION CLASS |
|--------------|---------------|-----------------|-------------------|---------------|---------------|--------------|-------------|------------------|------------------|
| (Nm) | (V) | (Hz) | (W) | (mm) | (A) | (min) | (rpm) | (IP) | |
| 10N.m | 230V | 50Hz | 155W | 45mm | 0.70A | S2 4min | 15rpm | Ip44 | Class F |
| 20N.m | 230V | 50Hz | 168W | 45mm | 0.75A | S2 4min | 15rpm | Ip44 | Class F |
| 30N.m | 230V | 50Hz | 203W | 45mm | 0.88A | S2 4min | 15rpm | Ip44 | Class F |
| 40N.m | 230V | 50Hz | 220W | 45mm | 1.00A | S2 4min | 12rpm | Ip44 | Class F |
| 40N.m | 230V | 50Hz | 253W | 45mm | 1.10A | S2 4min | 18rpm | Ip44 | Class F |
| 50N.m | 230V | 50Hz | 225W | 45mm | 1.00A | S2 4min | 12rpm | Ip44 | Class F |
| 60N.m | 230V | 50Hz | 230W | 45mm | 1.00A | S2 4min | 9rpm | Ip44 | Class F |

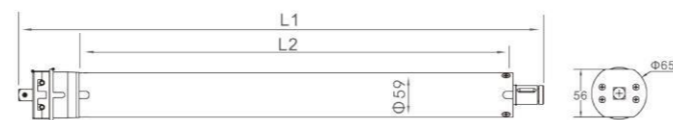
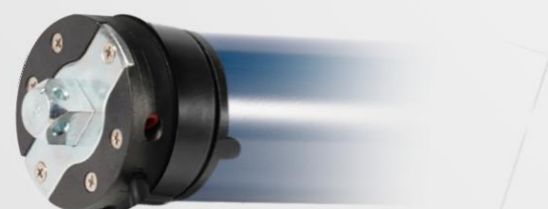
► 110V/60HZ is also available; please ask our sales team for details.



TUBULAR MOTOR

Standard Type

59S



59S

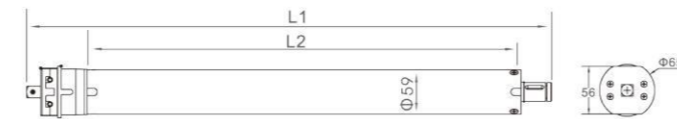
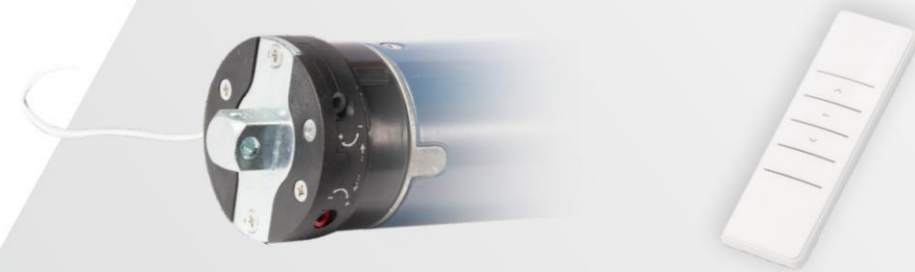
60mm in diameter, 80N.m ~ 180N.m. Standard type. Stable quality with attractive prices. CE, CCC and TUV approved. Ideal for awning, rolling shutter etc.

Technical Specifications

| RATED TORQUE (Nm) | RATED VOLTAGE (V) | RATED FREQUENCY (Hz) | RATED POWER INPUT (W) | TUBE DIAMETER (mm) | RATED CURRENT (A) | RUNNING TIME (min) | RATED SPEED (rpm) | PROTECTION INDEX (IP) | INSULATION CLASS |
|----------------------|----------------------|-------------------------|--------------------------|-----------------------|----------------------|-----------------------|----------------------|--------------------------|------------------|
| 80N.m | 230V | 50Hz | 330W | 60mm | 1.45A | S2 4min | 12rpm | Ip44 | Class F |
| 100N.m | 230V | 50Hz | 350W | 60mm | 1.55A | S2 4min | 12rpm | Ip44 | Class F |
| 120N.m | 230V | 50Hz | 365W | 60mm | 1.60A | S2 4min | 10rpm | Ip44 | Class F |
| 140N.m | 230V | 50Hz | 380W | 60mm | 1.68A | S2 4min | 10rpm | Ip44 | Class F |
| 150N.m | 230V | 50Hz | 390W | 60mm | 1.74A | S2 4min | 10rpm | Ip44 | Class F |
| 160N.m | 230V | 50Hz | 450W | 60mm | 1.95A | S2 4min | 7rpm | Ip44 | Class H |
| 180N.m | 230V | 50Hz | 450W | 60mm | 2.00A | S2 4min | 9rpm | Ip44 | Class F |

► 110V/60HZ is also available; please ask our sales team for details.

59SR



59SR

60mm in diameter, 80N.m ~ 180N.m. Standard & built-in receiver type. Stable quality with attractive prices. CE, CCC and TUV approved. Ideal for awning, rolling shutter etc.

Standard Type Built-In Receiver

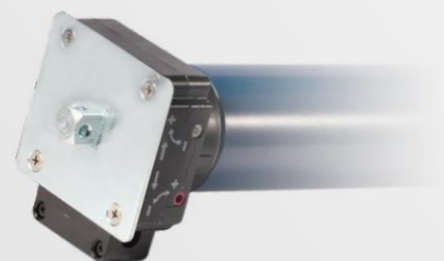
Technical Specifications

| RATED TORQUE (Nm) | RATED VOLTAGE (V) | RATED FREQUENCY (Hz) | RATED POWER INPUT (W) | TUBE DIAMETER (mm) | RATED CURRENT (A) | RUNNING TIME (min) | RATED SPEED (rpm) | PROTECTION INDEX (IP) | INSULATION CLASS |
|----------------------|----------------------|-------------------------|--------------------------|-----------------------|----------------------|-----------------------|----------------------|--------------------------|------------------|
| 80N.m | 230V | 50Hz | 330W | 60mm | 1.45A | S2 4min | 12rpm | Ip44 | Class F |
| 100N.m | 230V | 50Hz | 350W | 60mm | 1.55A | S2 4min | 12rpm | Ip44 | Class F |
| 120N.m | 230V | 50Hz | 365W | 60mm | 1.60A | S2 4min | 10rpm | Ip44 | Class F |
| 140N.m | 230V | 50Hz | 380W | 60mm | 1.68A | S2 4min | 10rpm | Ip44 | Class F |
| 150N.m | 230V | 50Hz | 390W | 60mm | 1.74A | S2 4min | 10rpm | Ip44 | Class F |
| 160N.m | 230V | 50Hz | 450W | 60mm | 1.95A | S2 4min | 7rpm | Ip44 | Class F |
| 180N.m | 230V | 50Hz | 450W | 60mm | 2.00A | S2 4min | 9rpm | Ip44 | Class F |

► 110V/60HZ is also available; please ask our sales team for details.

Manual Type

59M



59M

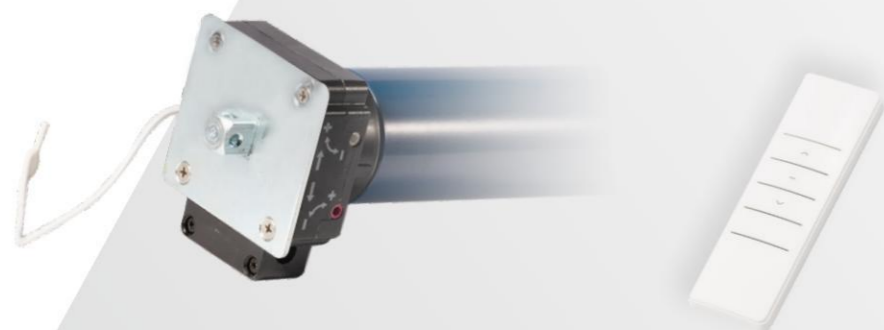
60mm in diameter, 80N.m ~ 180N.m. Manual override type. Stable quality with attractive prices. CE, CCC and TUV approved. Ideal for awning, rolling shutter etc.

Technical Specifications

| RATED TORQUE (Nm) | RATED VOLTAGE (V) | RATED FREQUENCY (Hz) | RATED POWER INPUT (W) | TUBE DIAMETER (mm) | RATED CURRENT (A) | RUNNING TIME (min) | RATED SPEED (rpm) | PROTECTION INDEX (IP) | INSULATION CLASS |
|----------------------|----------------------|-------------------------|--------------------------|-----------------------|----------------------|-----------------------|----------------------|--------------------------|------------------|
| 80N.m | 230V | 50Hz | 330W | 60mm | 1.45A | S2 4min | 12rpm | Ip44 | Class H |
| 100N.m | 230V | 50Hz | 350W | 60mm | 1.55A | S2 4min | 12rpm | Ip44 | Class H |
| 120N.m | 230V | 50Hz | 365W | 60mm | 1.60A | S2 4min | 10rpm | Ip44 | Class H |
| 140N.m | 230V | 50Hz | 380W | 60mm | 1.69A | S2 4min | 10rpm | Ip44 | Class H |
| 150N.m | 230V | 50Hz | 390W | 60mm | 1.74A | S2 4min | 10rpm | Ip44 | Class H |
| 160N.m | 230V | 50Hz | 450W | 60mm | 1.95A | S2 4min | 7rpm | Ip44 | Class H |
| 180N.m | 230V | 50Hz | 450W | 60mm | 2.00A | S2 4min | 9rpm | Ip44 | Class H |

► 110V/60HZ is also available; please ask our sales team for details.

59MR



59MR

60mm in diameter, 80N.m ~ 180N.m. Manual override & built-in receiver type. Stable quality with attractive prices. CE, CCC and TUV approved. Ideal for awning, rolling shutter etc.

Manual Type Built-In Receiver

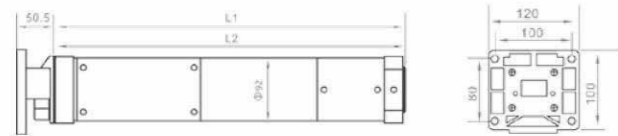
Technical Specifications

| RATED TORQUE | RATED VOLTAGE | RATED FREQUENCY | RATED POWER INPUT | TUBE DIAMETER | RATED CURRENT | RUNNING TIME | RATED SPEED | PROTECTION INDEX | INSULATION CLASS |
|--------------|---------------|-----------------|-------------------|---------------|---------------|--------------|-------------|------------------|------------------|
| (Nm) | (V) | (Hz) | (W) | (mm) | (A) | (min) | (rpm) | (IP) | |
| 80N.m | 230V | 50Hz | 330W | 60mm | 1.45A | S2 4min | 12rpm | Ip44 | Class H |
| 100N.m | 230V | 50Hz | 350W | 60mm | 1.55A | S2 4min | 12rpm | Ip44 | Class H |
| 120N.m | 230V | 50Hz | 365W | 60mm | 1.60A | S2 4min | 10rpm | Ip44 | Class H |
| 140N.m | 230V | 50Hz | 380W | 60mm | 1.68A | S2 4min | 10rpm | Ip44 | Class H |
| 150N.m | 230V | 50Hz | 390W | 60mm | 1.74A | S2 4min | 10rpm | Ip44 | Class H |
| 160N.m | 230V | 50Hz | 450W | 60mm | 1.95A | S2 4min | 7rpm | Ip44 | Class H |
| 180N.m | 230V | 50Hz | 450W | 60mm | 2.00A | S2 4min | 9rpm | Ip44 | Class H |

► 110V/60HZ is also available; please ask our sales team for details.

Standard Type

92S



92S

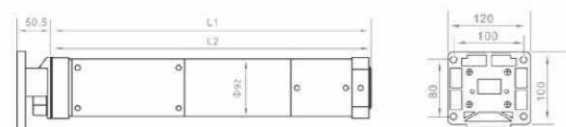
92mm in diameter, 170N.m ~ 550N.m. Standard type. Stable quality with attractive prices. CE, CCC and TUV approved. Ideal for rolling shutter etc.

Technical Specifications

| RATED TORQUE (Nm) | RATED VOLTAGE (V) | RATED FREQUENCY (Hz) | RATED POWER INPUT (W) | TUBE DIAMETER (mm) | RATED CURRENT (A) | RUNNING TIME (min) | RATED SPEED (rpm) | PROTECTION INDEX (IP) | INSULATION CLASS |
|----------------------|----------------------|-------------------------|--------------------------|-----------------------|----------------------|-----------------------|----------------------|--------------------------|------------------|
| 170N.m | 230V | 50Hz | 830W | 92mm | 3.60A | S2 4min | 16rpm | Ip44 | Class H |
| 180N.m | 230V | 50Hz | 820W | 92mm | 3.55A | S2 4min | 12rpm | Ip44 | Class H |
| 230N.m | 230V | 50Hz | 870W | 92mm | 3.80A | S2 4min | 12rpm | Ip44 | Class H |
| 300N.m | 230V | 50Hz | 800W | 92mm | 3.50A | S2 4min | 9rpm | Ip44 | Class H |
| 330N.m | 230V | 50Hz | 830W | 92mm | 3.60A | S2 4min | 9rpm | Ip44 | Class H |
| 350N.m | 230V | 50Hz | 850W | 92mm | 3.70A | S2 4min | 9rpm | Ip44 | Class H |
| 400N.m | 230V | 50Hz | 920W | 92mm | 4.00A | S2 4min | 7rpm | Ip44 | Class H |
| 450N.m | 230V | 50Hz | 940W | 92mm | 4.20A | S2 4min | 7rpm | Ip44 | Class H |
| 500N.m | 230V | 50Hz | 990W | 92mm | 4.30A | S2 4min | 6rpm | Ip44 | Class H |
| 550N.m | 230V | 50Hz | 1020W | 92mm | 4.40A | S2 4min | 6rpm | Ip44 | Class H |

► 110V/60HZ is also available; please ask our sales team for details.

92M NEW



92M NEW

92mm in diameter, 170N.m ~ 550N.m. Manual override type. CE, CCC and TUV approved. Ideal for rolling shutter etc.

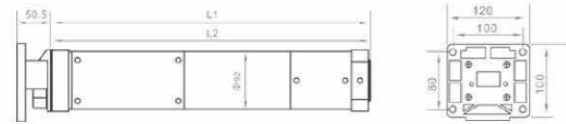
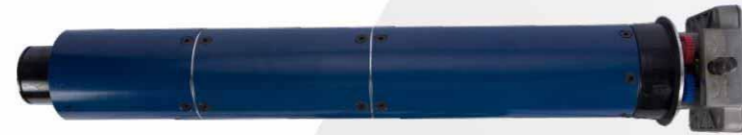
**Manual
Type**

Technical Specifications

| RATED TORQUE (Nm) | RATED VOLTAGE (V) | RATED FREQUENCY (Hz) | RATED POWER INPUT (W) | TUBE DIAMETER (mm) | RATED CURRENT (A) | RUNNING TIME (min) | RATED SPEED (rpm) | PROTECTION INDEX (IP) | INSULATION CLASS |
|----------------------|----------------------|-------------------------|--------------------------|-----------------------|----------------------|-----------------------|----------------------|--------------------------|------------------|
| 170N.m | 230V | 50Hz | 830W | 92mm | 3.60A | S2 4min | 16rpm | Ip44 | Class H |
| 180N.m | 230V | 50Hz | 820W | 92mm | 3.55A | S2 4min | 12rpm | Ip44 | Class H |
| 230N.m | 230V | 50Hz | 870W | 92mm | 3.80A | S2 4min | 12rpm | Ip44 | Class H |
| 300N.m | 230V | 50Hz | 800W | 92mm | 3.50A | S2 4min | 9rpm | Ip44 | Class H |
| 330N.m | 230V | 50Hz | 830W | 92mm | 3.60A | S2 4min | 9rpm | Ip44 | Class H |
| 350N.m | 230V | 50Hz | 850W | 92mm | 3.70A | S2 4min | 9rpm | Ip44 | Class H |
| 400N.m | 230V | 50Hz | 920W | 92mm | 4.00A | S2 4min | 7rpm | Ip44 | Class H |
| 450N.m | 230V | 50Hz | 940W | 92mm | 4.20A | S2 4min | 7rpm | Ip44 | Class H |
| 500N.m | 230V | 50Hz | 990W | 92mm | 4.30A | S2 4min | 6rpm | Ip44 | Class H |
| 550N.m | 230V | 50Hz | 1020W | 92mm | 4.40A | S2 4min | 6rpm | Ip44 | Class H |

► 110V/60HZ is also available; please ask our sales team for details.

92M LATEST



92M LATEST

92mm in diameter, 170N.m ~ 550N.m. Manual override type. No need to push in when use manual override. CE, CCC and TUV approved. Ideal for rolling shutter etc.

**Manual
Type**

Technical Specifications

| RATED TORQUE (Nm) | RATED VOLTAGE (V) | RATED FREQUENCY (Hz) | RATED POWER INPUT (W) | TUBE DIAMETER (mm) | RATED CURRENT (A) | RUNNING TIME (min) | RATED SPEED (rpm) | PROTECTION INDEX (IP) | INSULATION CLASS |
|----------------------|----------------------|-------------------------|--------------------------|-----------------------|----------------------|-----------------------|----------------------|--------------------------|------------------|
| 170N.m | 230V | 50Hz | 830W | 92mm | 3.60A | S2 4min | 16rpm | Ip44 | Class H |
| 180N.m | 230V | 50Hz | 820W | 92mm | 3.55A | S2 4min | 12rpm | Ip44 | Class H |
| 230N.m | 230V | 50Hz | 870W | 92mm | 3.80A | S2 4min | 12rpm | Ip44 | Class H |
| 300N.m | 230V | 50Hz | 800W | 92mm | 3.50A | S2 4min | 9rpm | Ip44 | Class H |
| 330N.m | 230V | 50Hz | 830W | 92mm | 3.60A | S2 4min | 9rpm | Ip44 | Class H |
| 350N.m | 230V | 50Hz | 850W | 92mm | 3.70A | S2 4min | 9rpm | Ip44 | Class H |
| 400N.m | 230V | 50Hz | 920W | 92mm | 4.00A | S2 4min | 7rpm | Ip44 | Class H |
| 450N.m | 230V | 50Hz | 940W | 92mm | 4.20A | S2 4min | 7rpm | Ip44 | Class H |
| 500N.m | 230V | 50Hz | 990W | 92mm | 4.30A | S2 4min | 6rpm | Ip44 | Class H |
| 550N.m | 230V | 50Hz | 1020W | 92mm | 4.40A | S2 4min | 6rpm | Ip44 | Class H |

► 110V/60HZ is also available; please ask our sales team for details.



TUBULAR MOTOR

More than just motors

We create: a set of humanized driving solutions;
We pursue: leading the future of technology-oriented
intelligent life mode.

See more at: www.china-develop.com

25EDC



25EDC

25mm in diameter, DC12V, 1.1N.m, Electronic Limit. Stable quality with attractive prices. CE, CCC and TUV approved. Ideal for rolling blinds, screen and etc.

DC Motor Electronic Limit

Technical Specifications

| RATED TORQUE | INPUT VOLTAGE | RATED FREQUENCY | RATED POWER INPUT | TUBE DIAMETER | RATED CURRENT | RUNNING TIME | RATED SPEED | PROTECTION INDEX | INSULATION CLASS |
|--------------|---------------|-----------------|-------------------|---------------|---------------|--------------|-------------|------------------|------------------|
| (Nm) | (V) | (Hz) | (W) | (mm) | (A) | (min) | (rpm) | (IP) | |
| 1.1N.m | 100-230V | 50/60Hz | 140W | 25mm | 2A | S2 1min | 25rpm | Ip44 | Class F |

45M

Awning Motor



45M

45mm in diameter, 50N.m. Manual override type. Stable quality with attractive prices. CE, CCC and TUV approved. Ideal for Awning.

Manual Type

Technical Specifications

| RATED TORQUE | RATED VOLTAGE | RATED FREQUENCY | RATED POWER INPUT | TUBE DIAMETER | RATED CURRENT | RUNNING TIME | RATED SPEED | PROTECTION INDEX | INSULATION CLASS |
|--------------|---------------|-----------------|-------------------|---------------|---------------|--------------|-------------|------------------|------------------|
| (Nm) | (V) | (Hz) | (W) | (mm) | (A) | (min) | (rpm) | (IP) | |
| 50N.m | 230V | 50Hz | 205W | 45mm | 0.89A | S2 4min | 12rpm | Ip44 | Class F |

► 110V/60HZ is also available; please ask our sales team for details.

45MR

Awning Motor



45MR

45mm in diameter, 50N.m. Manual override & built-in receiver type. Stable quality with attractive prices. CE, CCC and TUV approved. Ideal for Awning.

Manual Type Built-In Receiver

Technical Specifications

| RATED TORQUE | RATED VOLTAGE | RATED FREQUENCY | RATED POWER INPUT | TUBE DIAMETER | RATED CURRENT | RUNNING TIME | RATED SPEED | PROTECTION INDEX | INSULATION CLASS |
|--------------|---------------|-----------------|-------------------|---------------|---------------|--------------|-------------|------------------|------------------|
| (Nm) | (V) | (Hz) | (W) | (mm) | (A) | (min) | (rpm) | (IP) | |
| 50N.m | 230V | 50Hz | 205W | 45mm | 0.89A | S2 4min | 12rpm | Ip44 | Class F |

► 110V/60HZ is also available; please ask our sales team for details.

Adaptor

| NAME | PICTURE | PICTURE |
|-----------|---------|---------|
| DP35A-F37 | | |
| DP35A-H38 | | |
| DP45A-F67 | | |
| DP45A-F76 | | |

| NAME | PICTURE | PICTURE |
|-----------|---------|---------|
| DP45A-F97 | | |
| DP45A-H55 | | |
| DP45A-H67 | | |
| DP59A-F94 | | |
| DP59A-F97 | | |

Adaptor

| NAME | PICTURE | PICTURE |
|-----------|---------|---------|
| DP59A-H67 | | |
| DP92A-137 | | |
| DP92A-F94 | | |
| DP92A-F97 | | |

| NAME | PICTURE | PICTURE |
|--------------|---------|---------|
| DP92A-F106.5 | | |
| DP92A-F125 | | |
| DP92A-F127 | | |

Focus on Quality Continuous innovation

Consistently invest in research and development without distractions, with quality as the belief, from product development, production to application experience, we adhere to the world's leading production standards, dare to create, and ultimately improve the quality of users' life.



DP AUTOMATION

See more at: www.china-develop.com