



KEY SELECTOR

DP AUTOMATION



Tel: +86-572-6267 780/6266 596 Fax: +86-572-6267 892 E-mail: dp@China-develop.com
Website: www.china-develop.com



Technology drives the future.





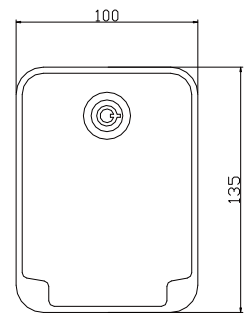
KEY SELECTOR

Key selector is mainly used with our Central motor. It can not only control the door/gate up and down, but also can release the electromagnetic brake mechanism of Central motor.

16019-1A

■ L13.5*W10*H8cm

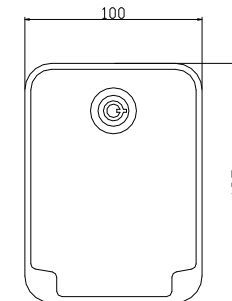
- Aluminum alloy material, Brass cylinder
- Metal keys, Powder coating aluminum alloy plate
- plate Silver plated contacts and terminals
- 1-1000 combinations available
- Rated Load: Maximum operating current: 16A
- Insulation Resistance: 200M Ω Min
- Dielectric Strength: 3000VAC (50-60HZ)
- Terminals and Grounding



16019-1B

■ L13.5*W10*H8.2cm

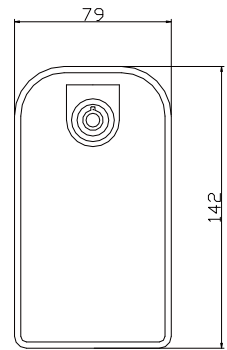
- Aluminum alloy material, Brass cylinder
- Metal keys, Powder coating aluminum alloy plate
- Silver plated contacts and terminals
- 1-1000 combinations available
- Rated Load: Maximum operating current: 16A
- Insulation Resistance: 200M Ω Min
- Dielectric Strength: 3000VAC (50-60HZ)
- Terminals and Grounding



16019-2A

■ L14.2*W7.9*H4.6cm

- Aluminum alloy material, Brass cylinder
 - Metal keys, Powder coating aluminum alloy plate
 - Silver plated contacts and terminals
 - 1-1000 combinations available
 - Rated Load: Maximum operating current: 16A
 - Insulation Resistance: 200M Ω Min
 - Dielectric Strength: 3000VAC (50-60HZ)
- Terminals and Grounding



16019-2B

■ L14.2*W7.9*H4.6cm

- Aluminum alloy material, Zinc-alloy cylinder
 - Metal keys, Powder coating aluminum alloy plate
 - Silver plated contacts and terminals
 - 1-1000 combinations available
 - Rated Load: Maximum operating current: 16A
 - Insulation Resistance: 200M Ω Min
 - Dielectric Strength: 3000VAC (50-60HZ)
- Terminals and Grounding

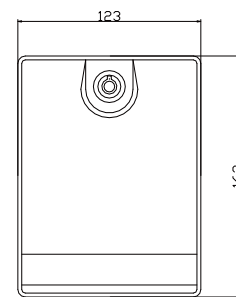




16019-3A

■ L16.2*W12.3*H4.6cm

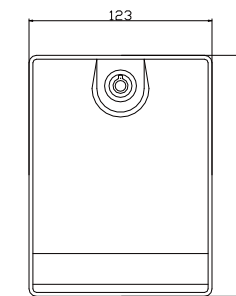
- Aluminum alloy material, Zinc-alloy cylinder
- Metal keys, Powder coating aluminum alloy plate
- Silver plated contacts and terminals
- External Cylinder 1-1000 combinations available, Internal Cylinder 1-81 combinations available
- Rated Load: Maximum operating current: 16A
- Insulation Resistance: 100M Ω Min
- Dielectric Strength: 1500VAC (50-60HZ)
Terminals and Grounding

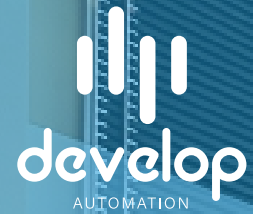


16019-3B

■ L16.2*W12.3*H4.6cm

- Aluminum alloy material, Zinc-alloy cylinder
- Metal keys, Powder coating aluminum alloy plate
- Silver plated contacts and terminals
- 1-1000 combinations available
- Rated Load: Maximum operating current: 16A
- Insulation Resistance: 200M Ω Min
- Dielectric Strength: 3000VAC (50-60HZ)
Terminals and Grounding





KEY SELECTOR

Key selector is mainly used with our Central motor. It can not only control the door/gate up and down, but also can release the electromagnetic brake mechanism of Central motor.

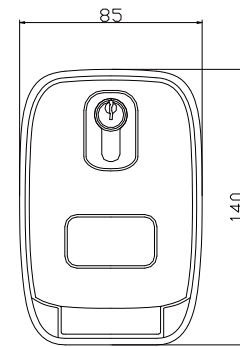
See more at: www.china-develop.com



16019-4A

■ L12.8*W8.5*H4.2cm

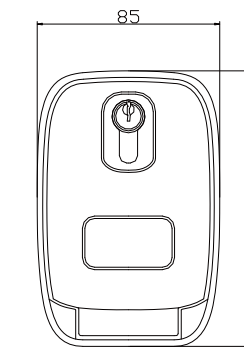
- Aluminum alloy material, Brass cylinder
 - Metal keys, Powder coating aluminum alloy plate
 - Silver plated contacts and terminals
 - 1-1000 combinations available
 - Rated Load: Maximum operating current: 16A
 - Insulation Resistance: 200M Ω Min
 - Dielectric Strength: 3000VAC (50-60HZ)
- Terminals and Grounding



16019-4C

■ L14*W8.5*H6.1cm

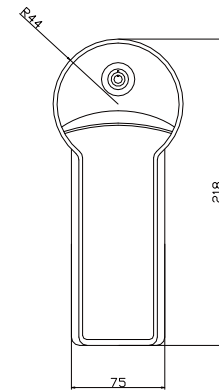
- Aluminum alloy material, Brass cylinder
 - Metal keys, Powder coating aluminum alloy plate
 - Silver plated contacts and terminals
 - 1-1000 combinations available
 - Rated Load: Maximum operating current: 16A
 - Insulation Resistance: 200M Ω Min
 - Dielectric Strength: 3000VAC (50-60HZ)
- Terminals and Grounding



16019-6A

■ L21.8*W7.5*H8cm

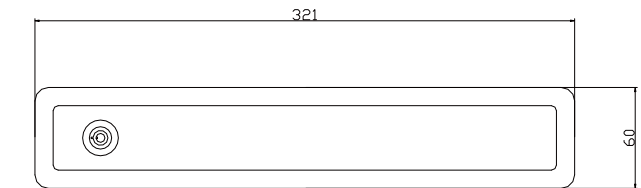
- Zinc alloy material, Brass cylinder
 - Metal Keys, Powder coating zinc alloy plate
 - Silver plated contacts and terminals
 - 1-1000 combinations available
 - Rated Load: Maximum operating current: 16A
 - Insulation Resistance: 100M Ω Min
 - Dielectric Strength: 1500VAC (50-60HZ)
- Terminals and Grounding



16019-7A

■ L6*W32.2*H4.8cm

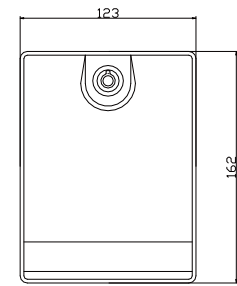
- Stainless steel material, Brass cylinder
 - Metal keys, stainless steel plate
 - Silver plated contacts and terminals
 - 1-1000 combinations available
 - Rated Load: Maximum operating current: 16A
 - Insulation Resistance: 200M Ω Min
 - Dielectric Strength: 3000VAC (50-60HZ)
- Terminals and Grounding



16019-8A

■ L16.2*W12.3*H4.8cm

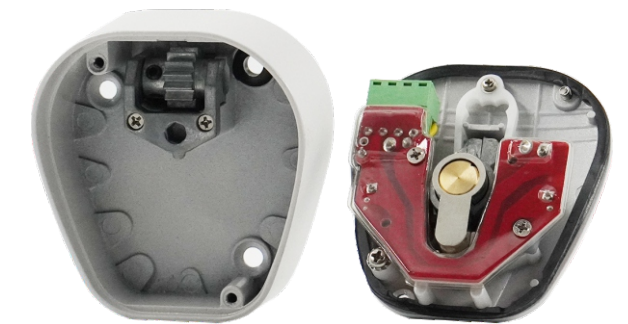
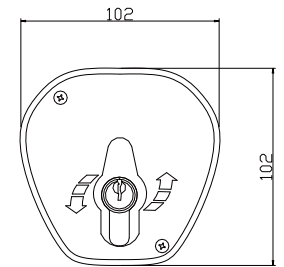
- Zinc alloy material, Brass cylinder
 - Metal keys, chrome-faced, Stainless steel plate
 - Silver plated contacts and terminals
 - 1-1000 combinations available
 - Rated Load: Maximum operating current: 16A
 - Insulation Resistance: 200M Ω Min
 - Dielectric Strength: 3000VAC (50-60HZ)
- Terminals and Grounding



16019-9A

■ L10.2*W10.2*H6.7

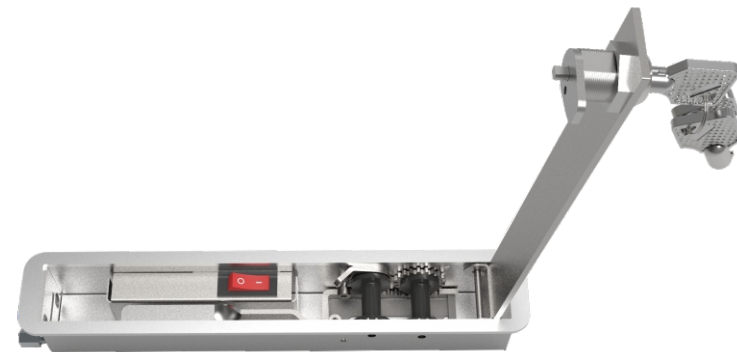
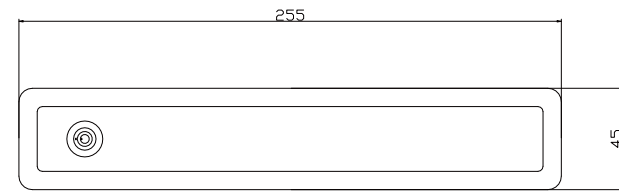
- Aluminum alloy material, Brass cylinder
 - Metal Keys
 - Silver plated contacts and terminals
 - 1-500 combinations available
 - Rated load: Maximum operating current: 16A
 - Insulation Resistance: 100M Ω Min
 - Dielectric Strength: 1500VAC (50-60HZ)
- Terminals and Grounding



16019-10A

■ L25.5*W4.5*H4.5cm

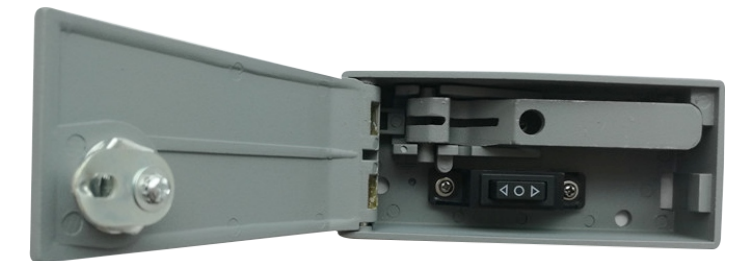
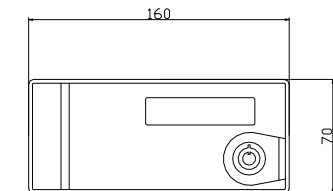
- Stainless steel material, Brass cylinder
 - Metal keys, stainless steel plate
 - Silver plated contacts and terminals
 - 1-1000 combinations available
 - Rated Load: Maximum operating current: 16A
 - Insulation Resistance: 200M Ω Min
 - Dielectric Strength: 3000VAC (50-60HZ)
- Terminals and Grounding



16019-11A

■ L16*W7*H4.5

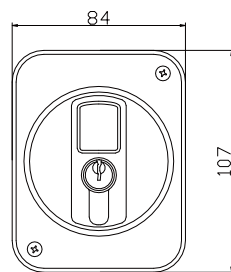
- Aluminum alloy material, Brass cylinder
 - Metal keys, Powder coating aluminum alloy plate
 - Silver plated contacts and terminals
 - 1-1000 combinations available
 - Rated Load: Maximum operating current: 16A
 - Insulation Resistance: 200M Ω Min
 - Dielectric Strength: 3000VAC (50-60HZ)
- Terminals and Grounding



16019-12A

■ L8.4*W10.7*H4.5

- Aluminum alloy material, Brass cylinder
- Metal Keys
- Silver plated contacts and terminals
- 1-500 combinations available
- Rated load: Maximum operating current: 16A
- Insulation Resistance: 100M Ω Min
- Dielectric Strength: 1500VAC (50-60HZ)
- Terminals and Grounding





KEY SELECTOR

To be a Creator

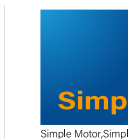
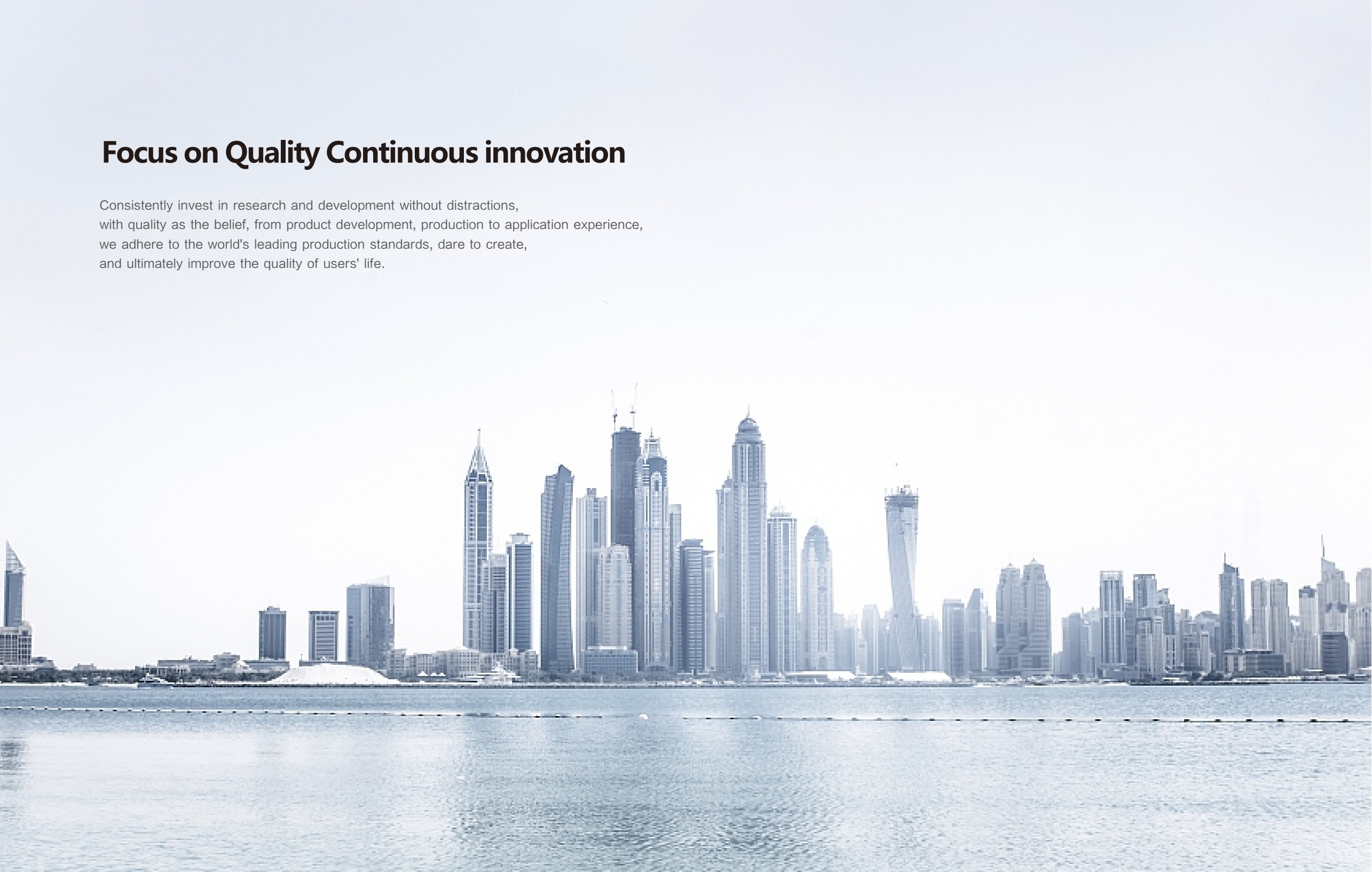
We are more than a producer for products,
but a creator for a better life.

We are engaged in the promotion for a comfortable,
safe and efficient life.

See more at: www.china-develop.com

Focus on Quality Continuous innovation

Consistently invest in research and development without distractions, with quality as the belief, from product development, production to application experience, we adhere to the world's leading production standards, dare to create, and ultimately improve the quality of users' life.



DP AUTOMATION

See more at: www.china-develop.com