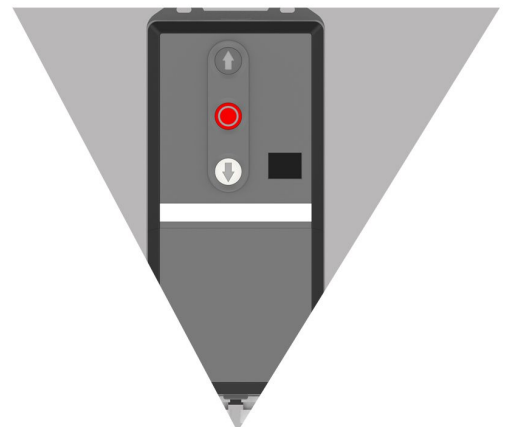


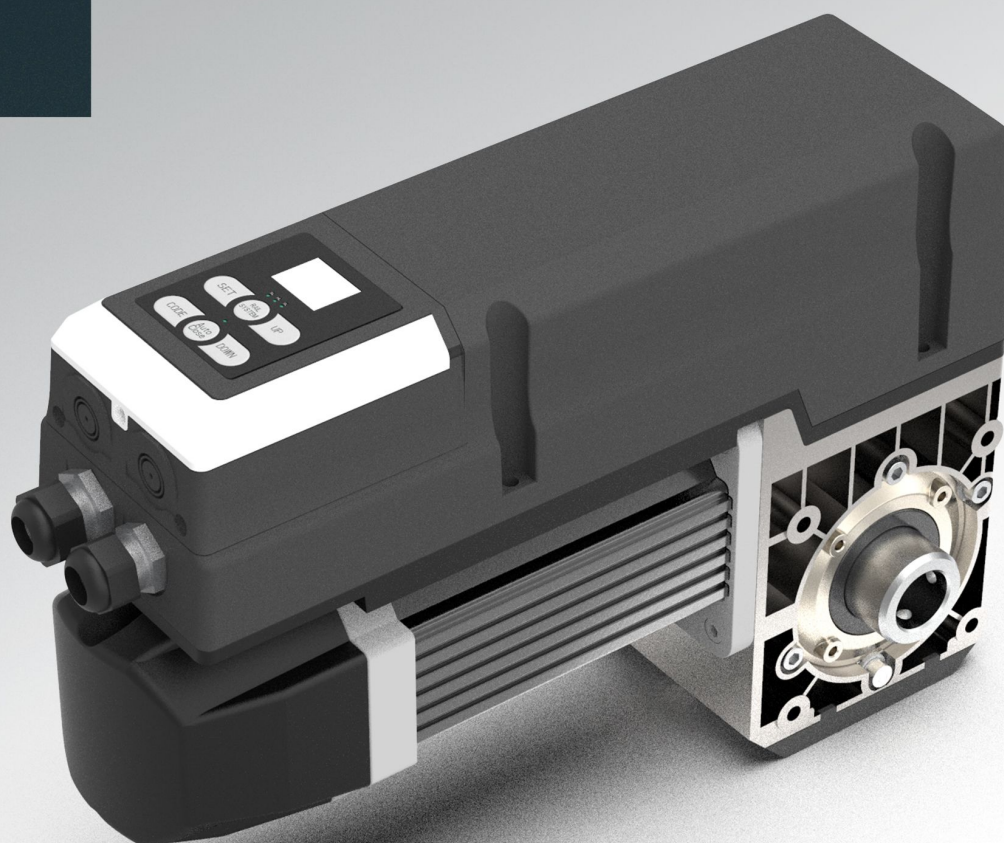


INDUSTRIAL DOOR MOTOR

N:16016



LION



DC series

Automation for Industrial Doors

LION 35



APPLICATION:

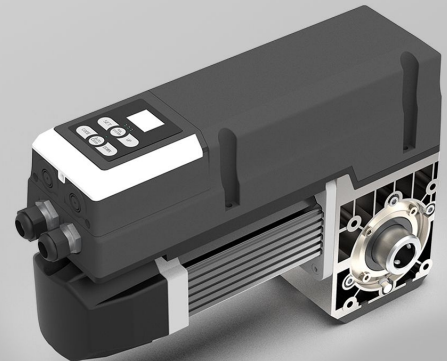
- > Residential Double Garage Door
- > Commercial Logistics & Parking Lot Doors
- > Factory Entrance Industrial Doors

DOOR SIZE SUPPORTED:

- Upto 195 Kgs Door Weight Supported
- Upto 15 m Door Size Supported
- Upto 5.0m Door High Supported

DOOR TYPE SUPPORTED:

- Sectional Panel Garage Door
- Sandwich/ Alu Panorama or Commercial Doors



.CIRCULATION CLUTCH

- PLUGGABLE CLUTCH
- CONVENIENT FOR MANUALLY OPENING
- PATENTED DESIGN



.DC DRIVE

- SAFETY ENSURANCE
- SOFT START & SOFT STOP
- SILENTLY RUNNING
- AUTOMATICALLY OBSTACLE REVERSE

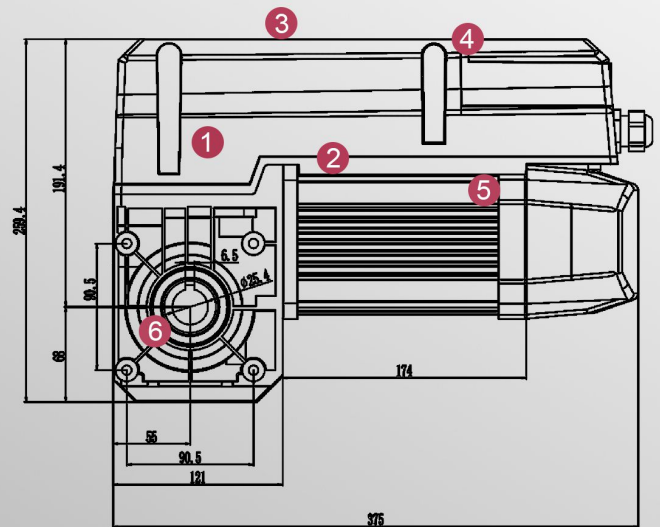


.AUTO ADJUSTED FORCE SYSTEM (AAFS)

- SMART CALCULATION SYSTEM
- EASIEST INSTALLATION
- AUTO SELECTED FORCE SYSTEM
- THE BEST POINT OF POWER, SMOOTHNESS AND SILENCE
- AUTO-LEARNING SYSTEM FOR EVERY RUNNING

PARAMETER . LION 35

Maximum Output torque	35Nm	1 Gearbox
Rated output torque	25Nm	2 Motor
Input voltage	110/220(1+10%)V 50Hz	3 Casing
Control system	24V DC	4 Flip
Motor power	0.35 Kw	5 Rear trim cover
Static holding torque	400Nm	6 Front clutch
Max. output speed	24rpm-32rpm	
Operation limit turns (limit travel)	15 turns of output shaft (max. 5.0m lifting height recommend)	
Sleeve shaft diameter (standard)	φ25.4mm	
Keyway size	6.3mm	
Thermal protection temperature	105°C	
Continuous sound pressure level	<70dB	
Max. cycles per hour	20	
IP protection class	IP54	
Temperature range	- 20°C /+ 60°C	
Standard kit	Drive motor&push button or TX/RX control	
Quick release with rope	Including	
Chain hoist module	Optional	
Optional sensing edge set (TX and RX)	Optional	



No active closing edge protection necessary for doors up to 14m²
Soft-Start and Soft-Stop protect the door and reduce repair costs

Standard sectional doors with cylindrical cable drum

Door size(max.) **18m²** Door weight(max.) **234kg**

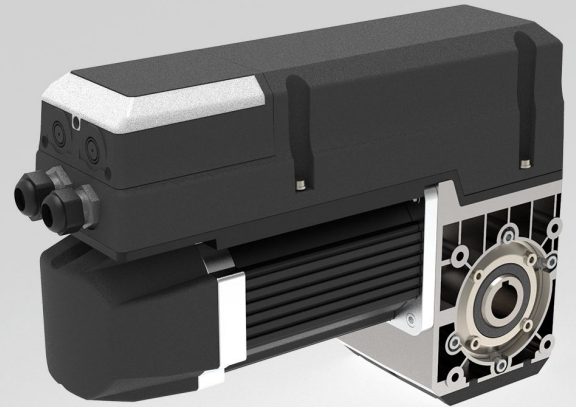
Vertical lift sectional doors with conical cable drum

Door size(max.) **14m²** Door weight(max.) **182kg**

High lift sectional doors with cylindrical-conical cable drum

Door size(max.) **18m²** Door weight(max.) **234kg**

LION 50



.AUTO ADJUSTED FORCE SYSTEM (AAFS)



.DC DRIVE



.CIRCULATION CLUTCH

APPLICATION

- FACTORY/ WAREHOUSE INDUSTRIAL DOORS
- LOGISTICS CENTER DOORS
- COMMERCIAL CENTER/ PARKING LOT DOORS

DOOR TYPE SUPPORTED

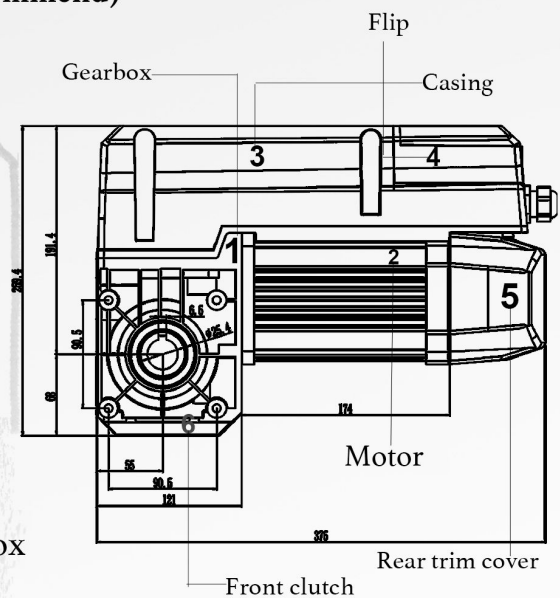
- SANDWICH INSULATED GARAGE/INDUSTRIAL DOORS
- ALU PANORAMA OR COMMERCIAL INDUSTRIAL DOORS

DOOR SIZE SUPPORTED

- UPTO 18 M² DOOR SIZE SUPPORTED
- UPTO 234 KGS DOOR WEIGHT SUPPORTED
- UPTO 7.0M DOOR HIGH SUPPORTED

PARAMETER LION 50

● MAXIMUM OUTPUT TORQUE	50Nm
● Rated out torque	35Nm
● Input voltage	110/220(1+10%)V 60Hz/50Hz 380v-420V
● Control system	24V DC
● Motor power	0.45Kw
● Static holding torque	400Nm
● Max. output speed	24rpm-32rpm
● Operation limit turns (limit travel)	15 turns of output shaft (max. 6.5m lifting height recommend)
● Sleeve shaft diameter (standard)	φ25.4mm
● Keyway size	6.3mm
● Thermal protection temperature	105°C
● Continuous sound pressure level	< 70dB
● Max. cycles per hour	20
● IP protection class	IP54
● Temperature range	- 20°C /+ 60°C
● Standard kit	Drive motor&wired control box
● Quick release with rope	Including
● Chain hoist module	Optional
● Optional sensing edge set (TX and RX)	Optional



No active closing edge protection necessary for doors up to 14m²
Soft-Start and Soft-Stop protect the door and reduce repair costs

Standard sectional doors with cylindrical cable drum

Door size(max.)	22m ²	Door weight(max.)	286 Kg
-----------------	------------------	-------------------	--------

Vertical lift sectional doors with conical cable drum

Door size(max.)	18m ²	Door weight(max.)	234Kg
-----------------	------------------	-------------------	-------

High lift sectional doors with cylindrical-conical cable drum

Door size(max.)	22m ²	Door weight(max.)	286Kg
-----------------	------------------	-------------------	-------

LION 70



APPLICATION

- Factory Industrial Doors
- Factory Industrial Doors
- Commercial Entrance Doors

Door Size Supported

- Upto 25 m2 Door Size Supported
- Upto 325 Kgs Door Weight Supported
- Upto 9. 0m Door High Supported

Door Type Supported

- Sandwich Insulated Garage/ Industrial Doors
- Alu Panoramaor CommercialIndustrial Doors



.AUTO ADJUSTED FORCE SYSTEM (AAFS)

- SMART CALCULATION SYSTEM
- EASIEST INSTALLATION
- AUTO SELECTED FORCE SYSTEM
- THE BEST POINT OF POWER, SMOOTHNESS AND SILENCE
- AUTO-LEARNING SYSTEM FOR EVERY RUNNING



.DC DRIVE

- SAFETY ENSURANCE
- SOFT START&SOFT STOP
- SILENTLY RUNNING
- AUTOMATICALLY OBSTACLE REVETRSE

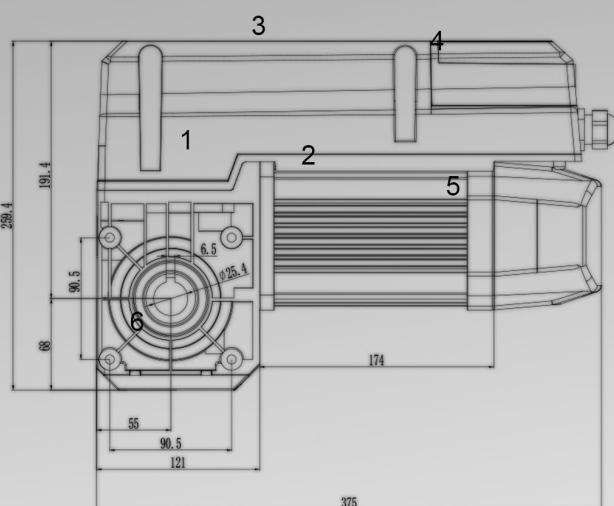


.CERCULATION CLUTCH

- PLUGGABLE CLUTCH
- CONVENIENT FOR MANUALLY OPENING
- PATENTED DESIGN

PARAMETER. LION 70

- 1 Gearbox
- 2 Motor
- 3 Casing
- 4 Flip
- 5 Rear trim cover
- 6 Front clutch



Maximum Output torque	70Nm
Fated output torque	50Nm
Input voltage	110/220(1+10%)V 60HZ/50Hz 380v-420V
Control system	24V DC
Motor power	0.55Kw
Static holding torque	400Nm
Max. output speed	24rpm-32rpm
Operation limit turns (limit travel)	15 turns of output shaft (max. 8.0m lifting height recommend)
Sleeve shaft diameter (standard)	φ25.4mm
Keyway size	6.3mm
Thermal protection temperature	105°C
Continuous sound pressure level	<70dB
Max. cycles per hour	20
IP protection class	IP54
Temperature range	- 20°C /+ 60°C
Standard kit	Drive motor&wired control box
Chain hoist module	Including
Optional sensing edge set (TX and RX)	Optional

No active closing edge protection necessary for doors up to 14m²
Soft-Start and Soft-Stop protect the door and reduce repair costs

Standard sectional doors with cylindrical cable drum			
Door size(max.)	28m²	Door weight(max.)	364kg
Vertical lift sectional doors with conical cable drum			
Door size(max.)	24m²	Door weight(max.)	312kg
High lift sectional doors with cylindrical-conical cable drum			
Door size(max.)	28m²	Door weight(max.)	364kg

THE CONTROL IS SUITABLE FOR
50N.M AND 70N.M
INDUSTRIAL DOOR OPENER.

THE INTERNAL INTERFACE HAS
CLEAR INSTRUCTIONS,
SO THAT YOU WILL NOT HAVE ERRORS
WHEN WIRING
FUNCTION SHORTCUT KEY,EASY TO OPERATE

BIG BUTTONS

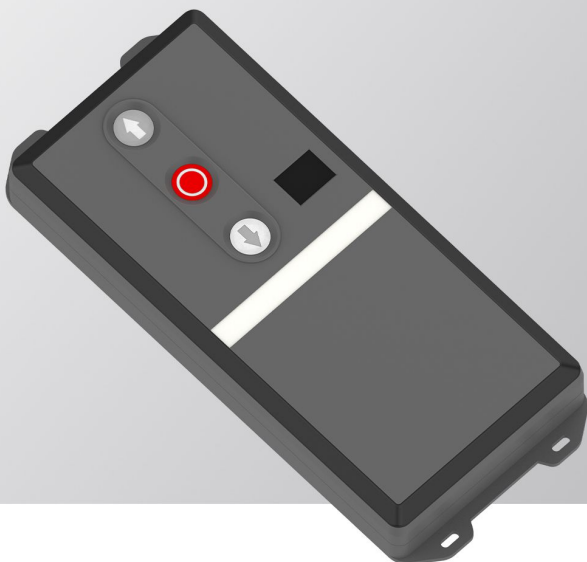
- O.S. C THREE BUTTONS
- SILICONE BUTTON, MORE SKID PROOF
- BIG KEYS, NOT EASY TO PRESS WRONG

SHORTCUT KEYS

- PRESS TO LEARN CODE, MORE CONVENIEN
- SILICONE BUTTON, MORE SKID PROOF
- CLEAR INSTRUCTIONS NOT EASY TO MAKE MISTAKES

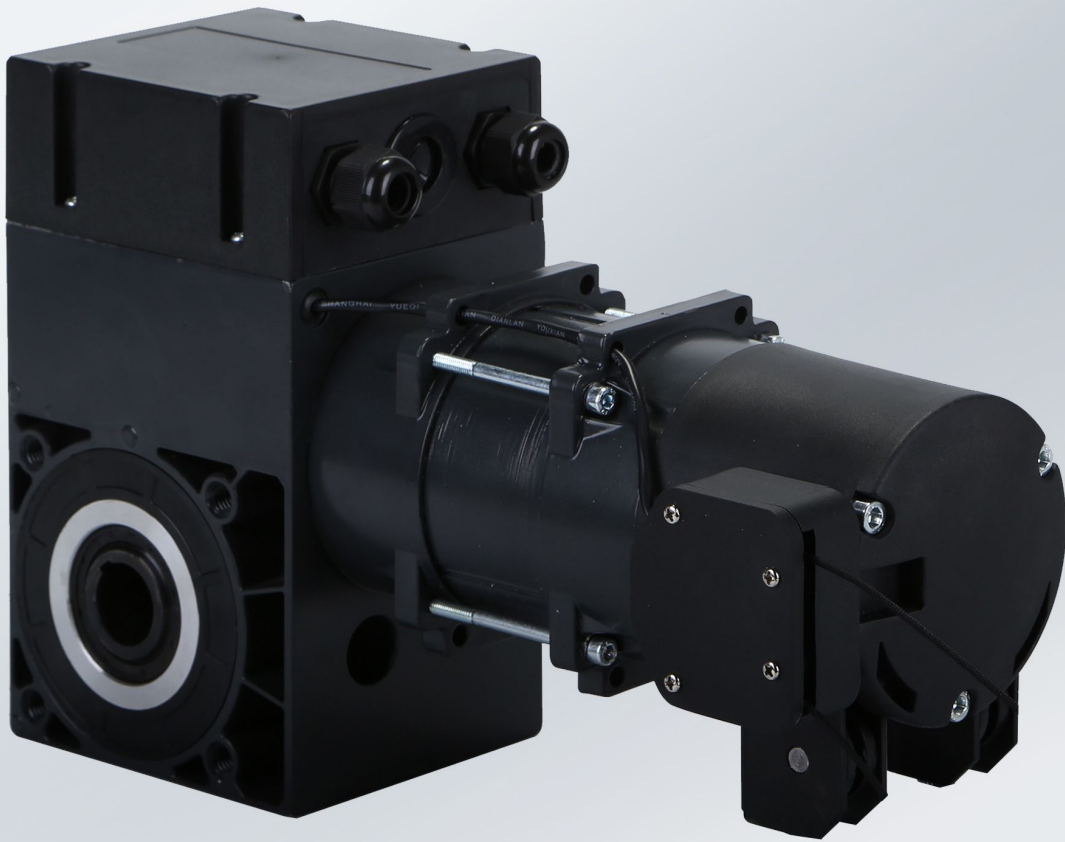
LED LIGHTS

- INNOVATIVE DESIGN, MORE BEAUTIFUL
- IN THE DARK, THE SIGHT IS STILL CLEAR



CONTROL BOX

BEAR



DC series

Automation for Industrial Doors

Product characteristics



Slow motor heating, long continuously working time.

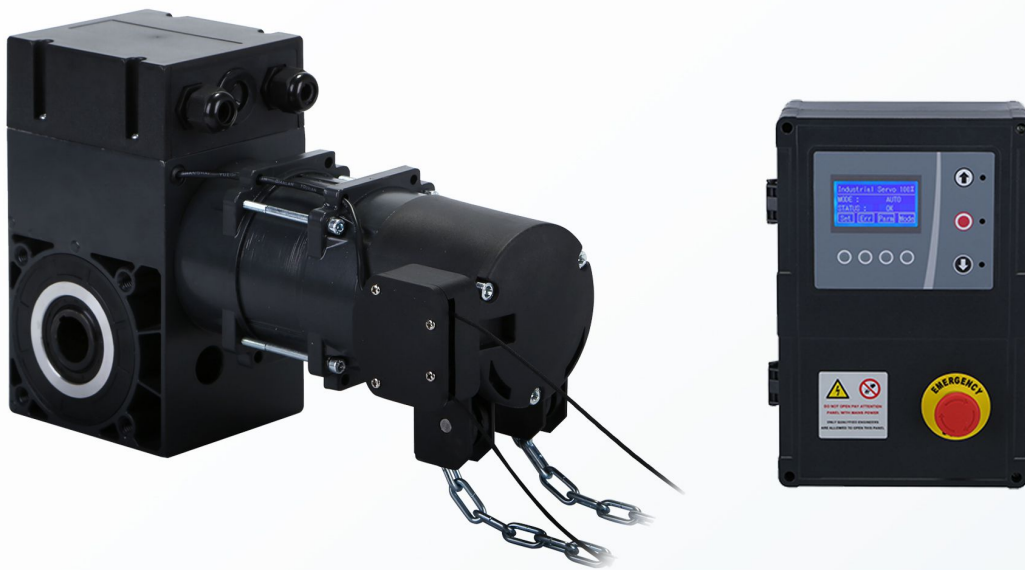
Electric limit switch, easy and accurate to set the limit position .

Soft start-slow stop, smooth door running.

Adjustable running speed, maximum output speed up to 50rpm

Menu-typed LCD control, easy to operate .

Quick connector between machine and control unit to avoid faulty wiring .



Unit model	BEAR 70 DC	BEAR 100 DC	BEAR 150 DC
Power Supply	AC220V ±10%		
Motor Power	450W	750W	750W
Max. Output Torque	70N.m	100N.m	150N.m
Output Speed Range	10-50RPM adjustable	10-40RPM adjustable	8-30RPM adjustable
Max.RPM	3000RPM		
Limit Travel	Output shaft rotates 19 rounds		
Encoder Type	Absolute value of single cycle		
Reducer Lubricating System	Liquid oil lubrication		
ManualAuto Switch	Pull cord switch		
Manual Release	Hand-pulled chain		
Max. LoadingDoor Area	30m ²	45m ²	65 m ²
Working Temperature	-20°C ~50°C		